



Airport International Group
مجموعة المطار الدولي

QAIA Quarterly Traffic Statistics
Q1-2012



Executive Summary:

Since the beginning of 2012, QAIA had witnessed tremendous growth and recovery from the adverse effects of the Arab Spring last year. The positive momentum had carried through over Jan-Mar 2012 in terms of PAX, ACM and to a lesser extent in Cargo movements. Notwithstanding, AIG constantly monitors the economical and external environment changes, and their possible effect on traffic (positive/negative).

- **Total PAX Q1-2012** had witnessed a Remarkable growth recording **1,395,008** PAX, with a **24.1%** Year-over-Year (YoY) growth.
- **Total ACM Q1-2012** recorded **15,373** movements compared to **14,419** last year, at **6.6%** growth.
- **Cargo movements** recorded **21,603** tons compared to **20,668** registering a modest growth of **4.52%** over 2011.
- Despite the political unrest throughout the region, AMM had, over 2011, witnessed slight growth in Total PAX & ACM, achieving a Year-over-Year (YoY) growth of **0.84%** and **0.9%** respectively, registering **5,467,726** passengers and **63,426** aircraft.

On the Routes & Network development side, positive momentum have been witnessed through 2012, with additional new services, carriers and frequencies added/announced including:

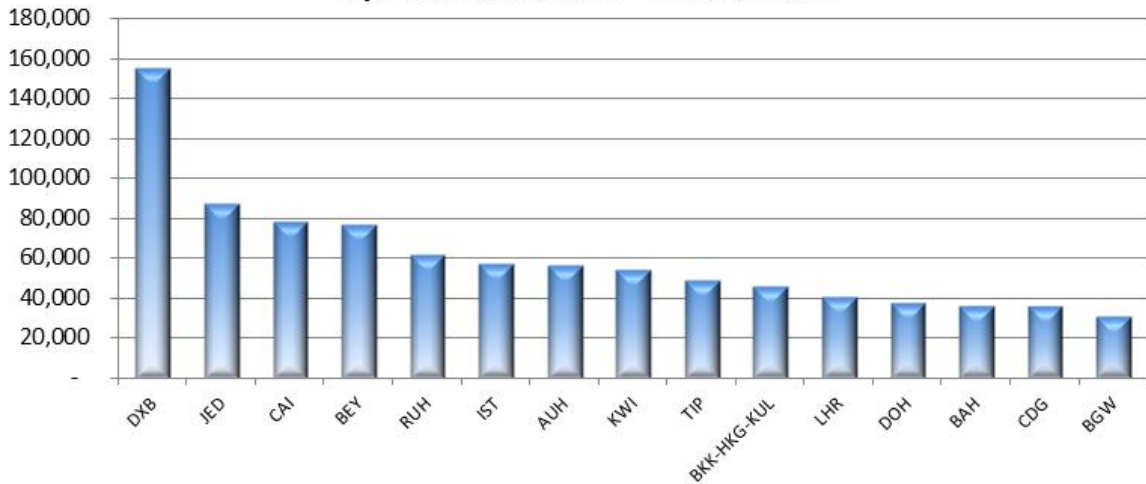
	Airline	Destination	Operation Type	Date of Operation
New Services	Royal Jordanian	Misrata	Scheduled	as of ... Jan-12
	Royal Falcon	Abu Dhabi	Scheduled	as of ... Mar-12
	Royal Falcon	Cairo	Scheduled	as of ... Mar-12
	Royal Falcon	Jeddah	Scheduled	as of ... Mar-12
	Royal Falcon	Najaf	Scheduled	as of ... Mar-12

Increased Frequency	Royal Jordanian	Abu Dhabi	Scheduled	as of ... Jan-12

Within the region, our most significant markets were DXB, JED, CAI, BEY and RUH collectively having ~458,656 PAX (a 33% of traffic) travelling in both directions YTD. In terms of the broader market (outside the Mena), the most significant markets were IST, TIP, (BKK/KUL/HKG), LHR, CDG collectively having ~226,881 PAX (a 16% of traffic) travelling in both directions YTD.

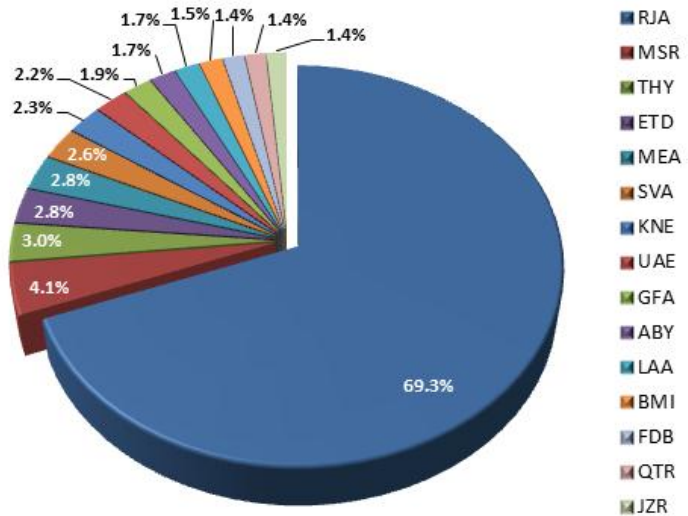
The following represent our top 15 destinations with the YTD traffic Q1-2012.

Top 15 Destinations - YTD Q1-2012

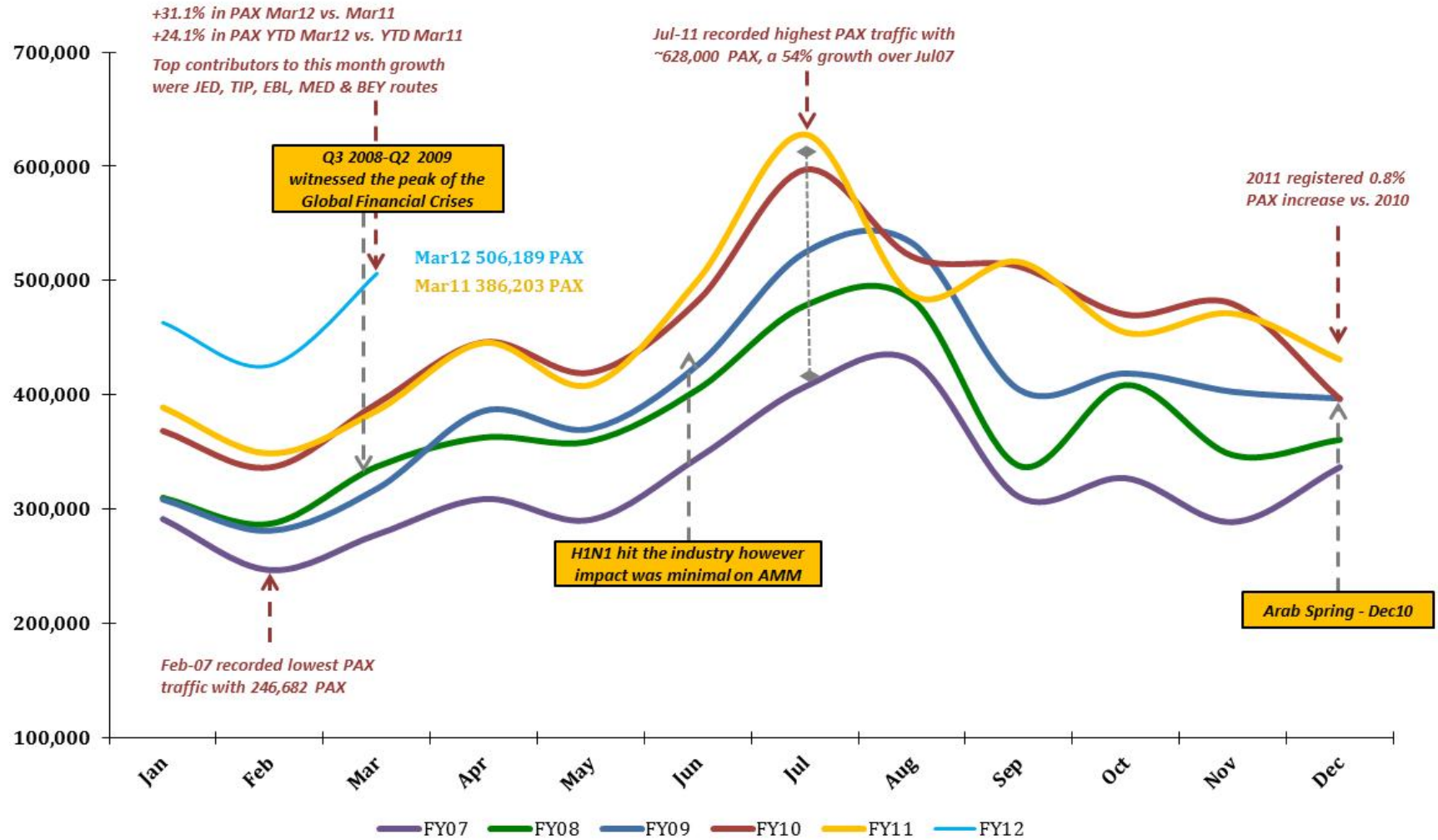


On the airlines' market shares side, based on ACMs, the top 5 airlines were RJ followed by MS, TK, EY and ME representing ~77% of total ACM at AMM.

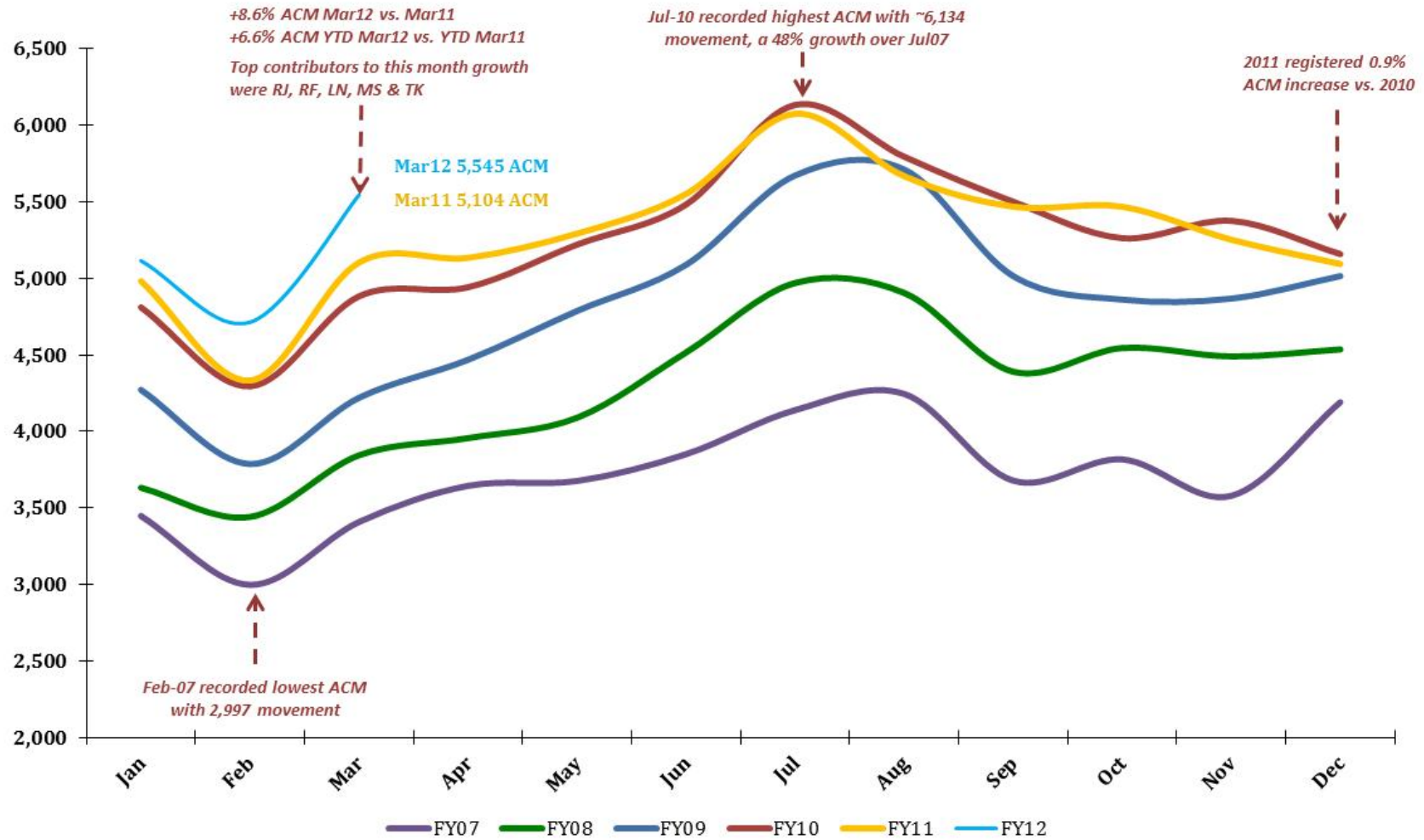
Airlines Market Shares - Q1-2012



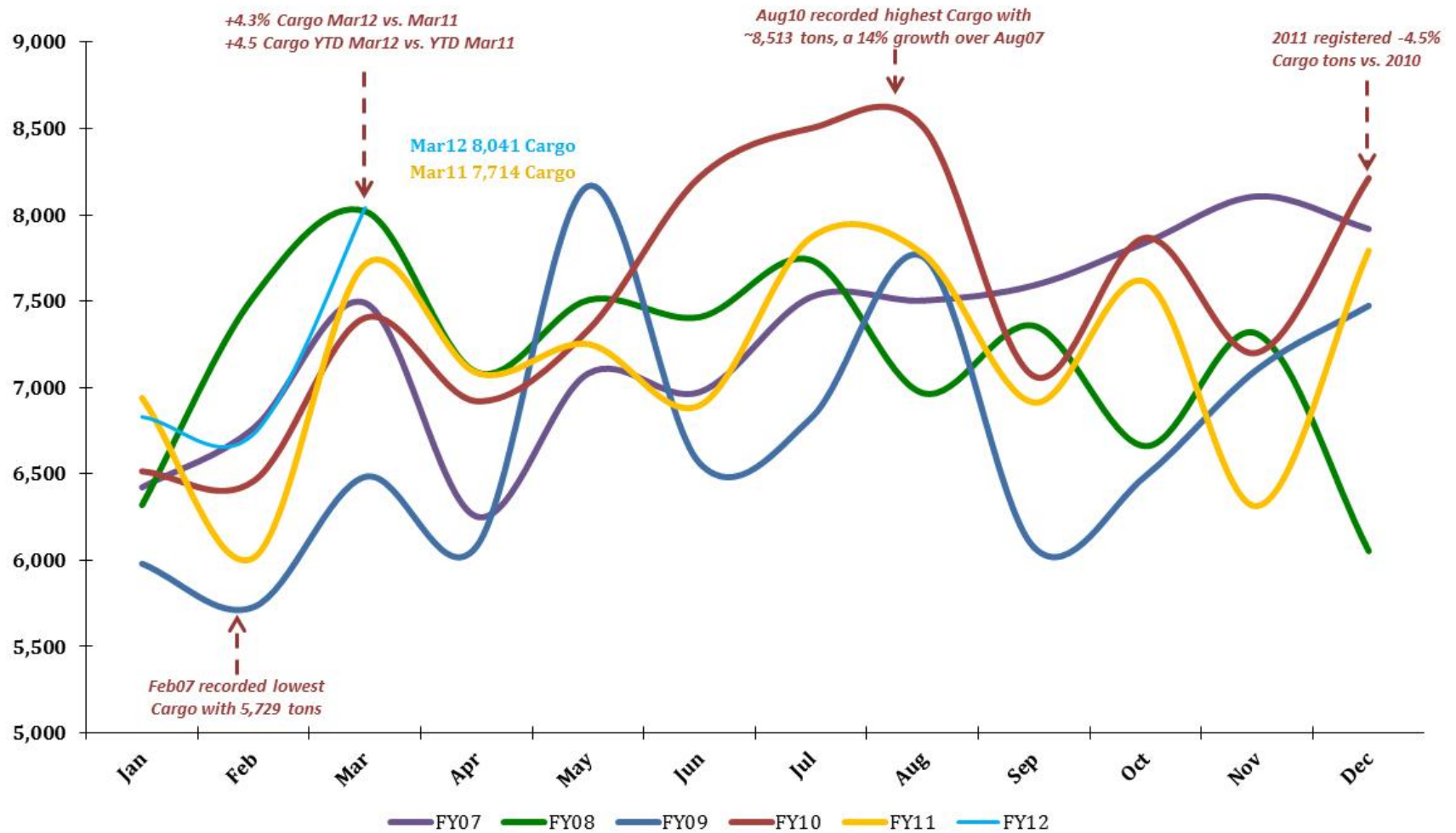
Total PAX per Month FY 2012 vs. Previous Years



Total ACM per Month FY 2012 vs. Previous Years



Total CARGO per Month FY 2012 vs. Previous Years



QAIA Quarterly Traffic Statistics

Q1 2012

Month	TOTAL ARRIVAL PAX			TOTAL DEPARTURE PAX			TOTAL PAX COMBINED		
	FY12	FY11	Var %	FY12	FY11	Var %	FY12	FY11	Var %
Jan	218,154	177,386	22.98%	245,074	211,614	15.81%	463,228	389,000	19.08%
Feb	221,181	182,889	20.94%	204,410	165,943	23.18%	425,591	348,832	22.00%
Mar	259,065	197,952	30.87%	247,124	188,251	31.27%	506,189	386,203	31.07%
Apr		222,993	0.00%		222,533	0.00%		445,526	0.00%
May		208,811	0.00%		200,016	0.00%		408,827	0.00%
Jun		278,591	0.00%		221,971	0.00%		500,562	0.00%
Jul		322,221	0.00%		305,748	0.00%		627,969	0.00%
Aug		225,339	0.00%		262,141	0.00%		487,480	0.00%
Sep		230,895	0.00%		285,658	0.00%		516,553	0.00%
Oct		227,821	0.00%		226,741	0.00%		454,562	0.00%
Nov		230,905	0.00%		240,357	0.00%		471,262	0.00%
Dec		219,027	0.00%		211,923	0.00%		430,950	0.00%
YTD March	698,400	558,227	25.11%	696,608	565,808	23.12%	1,395,008	1,124,035	24.11%
Total	698,400	2,724,830		696,608	2,742,896		1,395,008	5,467,726	

Month	TOTAL ARRIVAL ACM			TOTAL DEPARTURE ACM			TOTAL ACM COMBINED		
	FY12	FY11	Var %	FY12	FY11	Var %	FY12	FY11	Var %
Jan	2,555	2,487	2.73%	2,560	2,495	2.61%	5,115	4,982	2.67%
Feb	2,363	2,167	9.04%	2,350	2,166	8.49%	4,713	4,333	8.77%
Mar	2,769	2,556	8.33%	2,776	2,548	0.00%	5,545	5,104	8.64%
Apr		2,564	0.00%		2,570	0.00%		5,134	0.00%
May		2,645	0.00%		2,648	0.00%		5,293	0.00%
Jun		2,777	0.00%		2,775	0.00%		5,552	0.00%
Jul		3,038	0.00%		3,038	0.00%		6,076	0.00%
Aug		2,833	0.00%		2,835	0.00%		5,668	0.00%
Sep		2,735	0.00%		2,734	0.00%		5,469	0.00%
Oct		2,737	0.00%		2,731	0.00%		5,468	0.00%
Nov		2,628	0.00%		2,625	0.00%		5,253	0.00%
Dec		2,547	0.00%		2,547	0.00%		5,094	0.00%
YTD March	7,687	7,210	6.62%	7,686	7,209	6.62%	15,373	14,419	6.62%
Total	7,687	31,714		7,686	31,712		15,373	63,426	

Month	TOTAL ARRIVAL CARGO TONS			TOTAL DEPARTURE CARGO TONS			TOTAL CARGO COMBINED TONS		
	FY12	FY11	Var %	FY12	FY11	Var %	FY12	FY11	Var %
Jan	3,960	4,089	-3.16%	2,871	2,851	0.71%	6,831	6,940	-1.57%
Feb	4,046	3,665	10.39%	2,684	2,349	14.28%	6,731	6,014	11.91%
Mar	4,716	4,398	7.22%	3,325	3,315	0.00%	8,041	7,714	4.25%
Apr		4,248	0.00%		2,838	0.00%		7,086	0.00%
May		4,352	0.00%		2,900	0.00%		7,252	0.00%
Jun		4,024	0.00%		2,872	0.00%		6,897	0.00%
Jul		4,713	0.00%		3,157	0.00%		7,870	0.00%
Aug		4,671	0.00%		3,106	0.00%		7,777	0.00%
Sep		3,989	0.00%		2,925	0.00%		6,914	0.00%
Oct		4,545	0.00%		3,068	0.00%		7,612	0.00%
Nov		3,830	0.00%		2,484	0.00%		6,314	0.00%
Dec		4,759	0.00%		3,034	0.00%		7,794	0.00%
YTD March	12,722	12,153	4.68%	8,881	8,515	4.29%	21,603	20,668	4.52%
Total	12,722	51,285		8,881	34,898		21,603	86,184	

More Information:

For more information about QAIA, AIG & our Corporate Profile, kindly visit us at: www.aig.aero

Feedback & Comments:

For any feedback, comments or other enquiries, please do not hesitate to contact the Route Development Department at:

- *Tel: +962 (6) 445 3000*
- Fax: +962 (6) 445 3444*
- [*RD@aig.aero*](mailto:RD@aig.aero)
- Airport International Group*
- P.O. Box 39052*
- Amman 11104*
- Jordan*