

Executive Summary:

Throughout the first half of 2012, QAIA has witnessed remarkable growth and recovery from the adverse effects of the Arab Spring last year. The positive momentum had carried through over the first half of 2012 in terms of PAX, ACM and to a lesser extent in Cargo movements. Notwithstanding, AIG constantly monitors the economical and external environment changes, and their possible effect on traffic (positive/negative).

- **Total PAX H1-2012** had witnessed a Remarkable growth recording **3,023,499** PAX, with a **22.0%** Year-over-Year (YoY) growth.
- **Total ACM H1-2012** recorded **32,812** movements compared to **30,398** last year, at **7.9%** growth.
- **Cargo movements** recorded **45,480** tons compared to **41,903** registering a growth of **8.5%** over H1-2011.
- Despite the political unrest throughout the region, AMM had, over 2011, witnessed slight growth in Total PAX & ACM, achieving a Year-over-Year (YoY) growth of **0.84%** and **0.9%** respectively, registering **5,467,726** passengers and **63,426** aircraft.

On the Routes & Network development side, positive momentum has been witnessed through 2012, with additional new services, carriers and frequencies added/announced including:

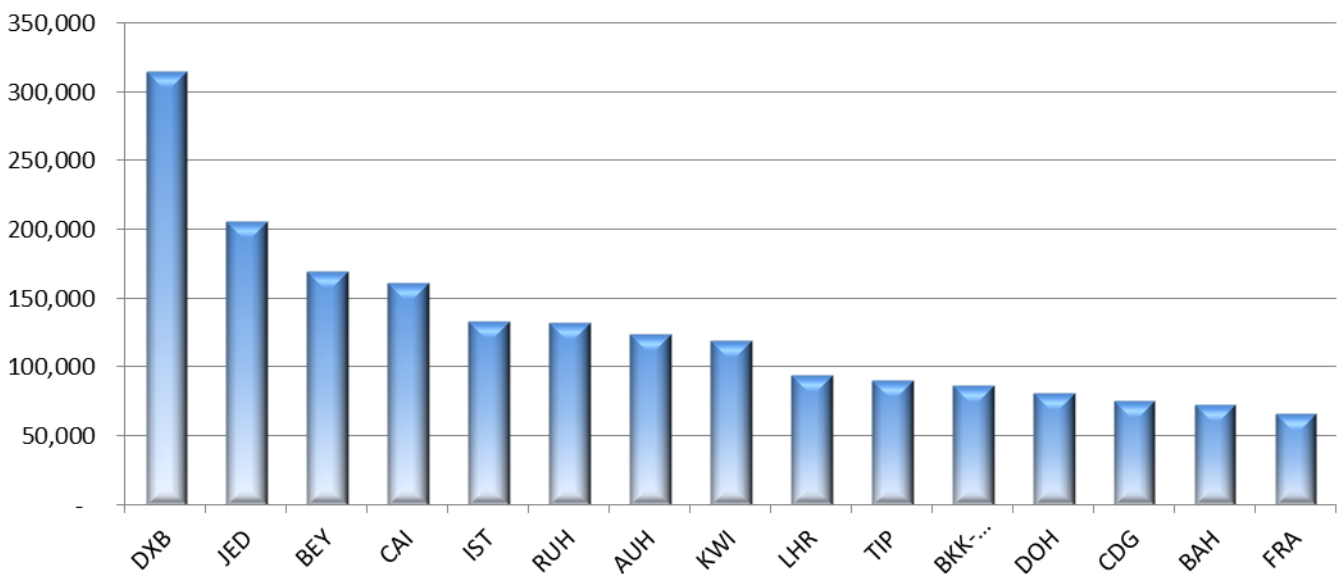
	Airline	Destination	Operation Type	Date of Operation
New Services	Royal Jordanian	Misrata	Scheduled	as of ... Jan-12
	Royal Falcon	Abu Dhabi	Scheduled	as of ... Mar-12
	Royal Falcon	Cairo	Scheduled	as of ... Mar-12
	Royal Falcon	Jeddah	Scheduled	as of ... Mar-12
	Royal Falcon	Najaf	Scheduled	as of ... Mar-12
	Cyprus Airways	Larnaca	Scheduled	as of ... May-12
	Armavia	Yerevan	Charter	as of ... May-12
	Afriqiyah	Tripoli/Benghazi	Scheduled	as of ... May-12
	Ghadames	Tripoli	Scheduled	as of ... Jun-12
Increased Frequency	Royal Jordanian	Abu Dhabi	Scheduled	as of ... Jan-12
	Royal Jordanian	Al Ain	resumed service	as of ... Jun-12

Within the region, our most significant markets were DXB, JED, BEY, CAI, and RUH collectively having ~984,400 PAX (a 33% of traffic) travelling in both directions YTD. In terms of the broader market (outside the Mena), the most significant markets were IST, LHR, TIP, (BKK/KUL/HKG), CDG collectively having ~479,199 PAX (a 16% of traffic) travelling in both directions YTD.

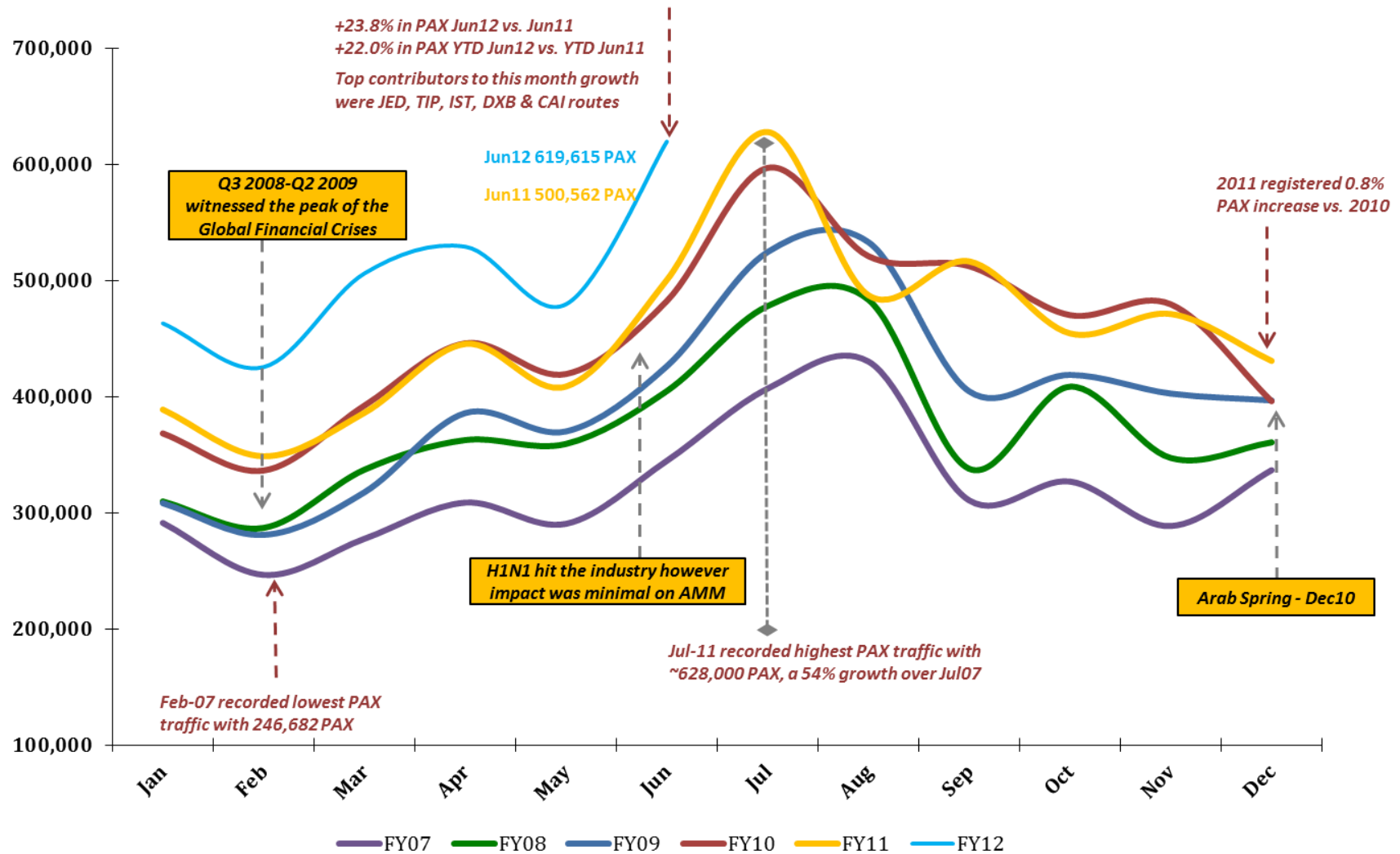
In terms of ACM, the top 5 YTD airlines sorted in descending order were Royal Jordanian, Egypt Air, Turkish Airlines, Etihad Airways and Middle East Airlines.

The following represent our top 15 destinations with the YTD traffic H1-2012.

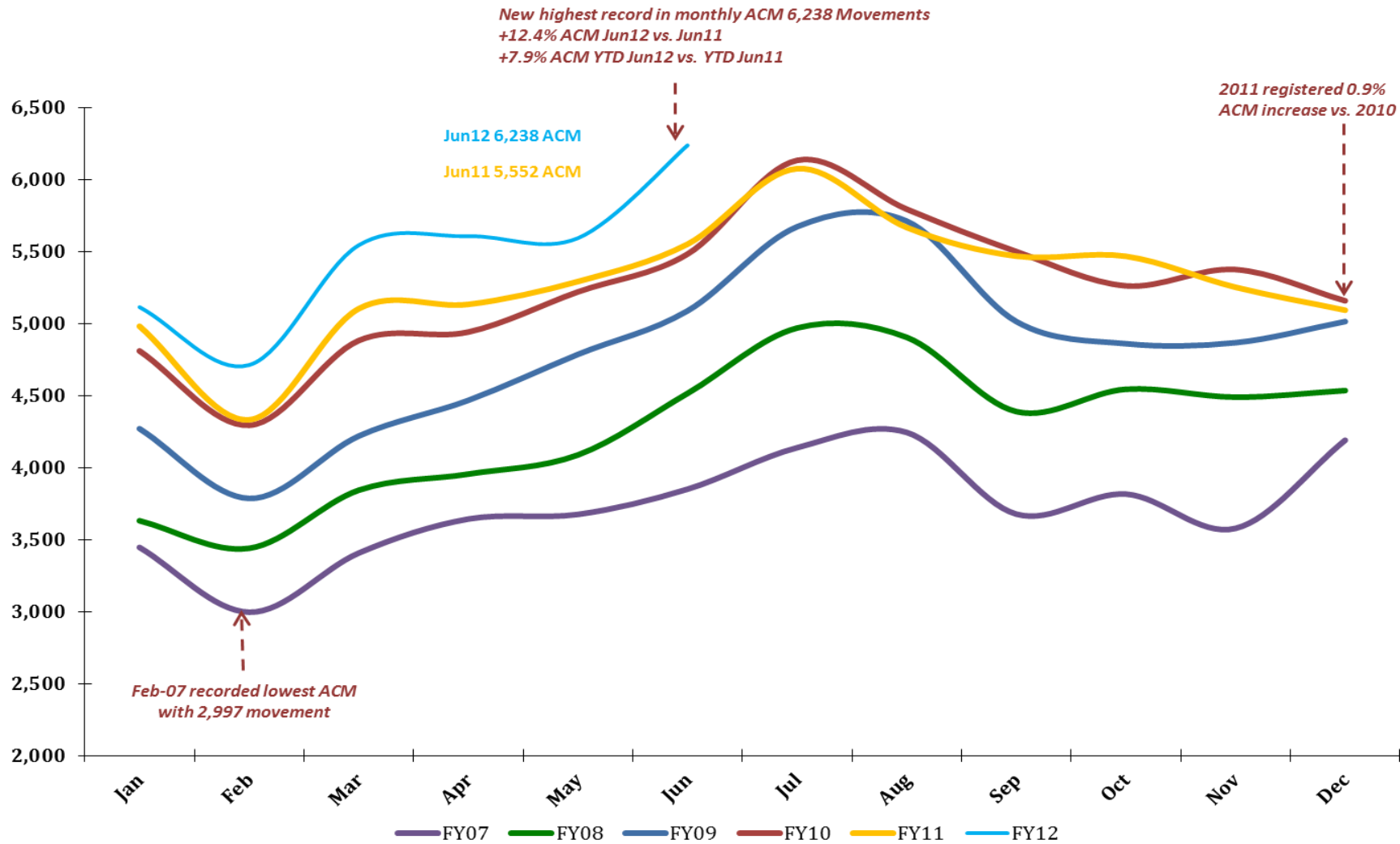
Top 15 Destinations - H1-2012



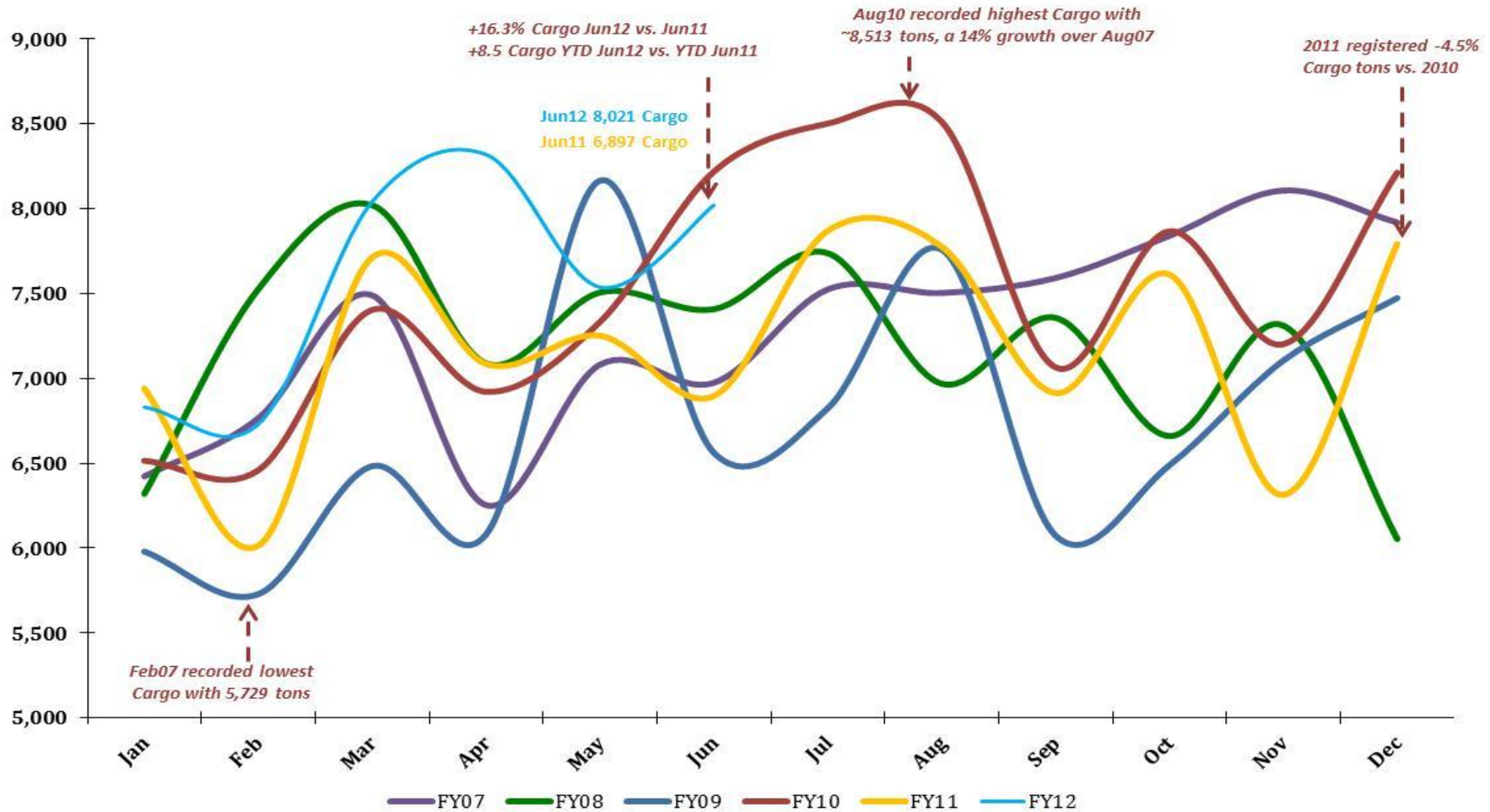
Total PAX per Month FY 2012 vs. Previous Years



Total ACM per Month FY 2012 vs. Previous Years



Total CARGO per Month FY 2012 vs. Previous Years



QAIA Quarterly Traffic Statistics

1st Half 2012

Month	TOTAL ARRIVAL PAX			TOTAL DEPARTURE PAX			TOTAL PAX COMBINED		
	FY12	FY11	Var %	FY12	FY11	Var %	FY12	FY11	Var %
Jan	218,154	177,386	22.98%	245,074	211,614	15.81%	463,228	389,000	19.08%
Feb	221,181	182,889	20.94%	204,410	165,943	23.18%	425,591	348,832	22.00%
Mar	259,065	197,952	30.87%	247,124	188,251	31.27%	506,189	386,203	31.07%
Apr	263,436	222,993	18.14%	265,784	222,533	19.44%	529,220	445,526	18.79%
May	242,336	208,811	16.06%	237,320	200,016	18.65%	479,656	408,827	17.32%
Jun	336,813	278,591	20.90%	282,802	221,971	27.40%	619,615	500,562	23.78%
Jul		322,221	0.00%		305,748	0.00%		627,969	0.00%
Aug		225,339	0.00%		262,141	0.00%		487,480	0.00%
Sep		230,895	0.00%		285,658	0.00%		516,553	0.00%
Oct		227,821	0.00%		226,741	0.00%		454,562	0.00%
Nov		230,905	0.00%		240,357	0.00%		471,262	0.00%
Dec		219,027	0.00%		211,923	0.00%		430,950	0.00%
YTD May	1,540,985	1,268,622	21.47%	1,482,514	1,210,328	22.49%	3,023,499	2,478,950	21.97%
Total	1,540,985	2,724,830		1,482,514	2,742,896		3,023,499	5,467,726	

Month	TOTAL ARRIVAL ACM			TOTAL DEPARTURE ACM			TOTAL ACM COMBINED		
	FY12	FY11	Var %	FY12	FY11	Var %	FY12	FY11	Var %
Jan	2,555	2,487	2.73%	2,560	2,495	2.61%	5,115	4,982	2.67%
Feb	2,363	2,167	9.04%	2,350	2,166	8.49%	4,713	4,333	8.77%
Mar	2,769	2,556	8.33%	2,776	2,548	8.95%	5,545	5,104	8.64%
Apr	2,807	2,564	9.48%	2,800	2,570	8.95%	5,607	5,134	9.21%
May	2,792	2,645	5.56%	2,802	2,648	5.82%	5,594	5,293	5.69%
Jun	3,120	2,777	12.35%	3,118	2,775	12.36%	6,238	5,552	12.36%
Jul		3,038	0.00%		3,038	0.00%		6,076	0.00%
Aug		2,833	0.00%		2,835	0.00%		5,668	0.00%
Sep		2,735	0.00%		2,734	0.00%		5,469	0.00%
Oct		2,737	0.00%		2,731	0.00%		5,468	0.00%
Nov		2,628	0.00%		2,625	0.00%		5,253	0.00%
Dec		2,547	0.00%		2,547	0.00%		5,094	0.00%
YTD May	16,406	15,196	7.96%	16,406	15,202	7.92%	32,812	30,398	7.94%
Total	16,406	31,714		16,406	31,712		32,812	63,426	

Month	TOTAL ARRIVAL CARGO TONS			TOTAL DEPARTURE CARGO TONS			TOTAL CARGO COMBINED TONS		
	FY12	FY11	Var %	FY12	FY11	Var %	FY12	FY11	Var %
Jan	3,960	4,089	-3.16%	2,871	2,851	0.71%	6,831	6,940	-1.57%
Feb	4,046	3,665	10.39%	2,684	2,349	14.28%	6,731	6,014	11.91%
Mar	4,716	4,398	7.22%	3,325	3,315	0.30%	8,041	7,714	4.25%
Apr	5,061	4,248	19.15%	3,258	2,838	14.81%	8,319	7,086	17.41%
May	4,284	4,352	-1.58%	3,254	2,900	12.21%	7,538	7,252	3.94%
Jun	4,945	4,024	22.87%	3,076	2,872	7.09%	8,021	6,897	16.30%
Jul		4,713	0.00%		3,157	0.00%		7,870	0.00%
Aug		4,671	0.00%		3,106	0.00%		7,777	0.00%
Sep		3,989	0.00%		2,925	0.00%		6,914	0.00%
Oct		4,545	0.00%		3,068	0.00%		7,612	0.00%
Nov		3,830	0.00%		2,484	0.00%		6,314	0.00%
Dec		4,759	0.00%		3,034	0.00%		7,794	0.00%
YTD May	27,012	24,778	9.02%	18,468	17,125	7.84%	45,480	41,903	8.54%
Total	27,012	51,285		18,468	34,898		45,480	86,184	

More Information:

For more information about QAIA, AIG & our Corporate Profile, kindly visit us at: www.aig.aero

Feedback & Comments:

For any feedback, comments or other enquiries, please do not hesitate to contact the Route Development Department at:

- *Tel: +962 (6) 445 3000*
- Fax: +962 (6) 445 3444*
- [*RD@aig.aero*](mailto:RD@aig.aero)
- Airport International Group*
- P.O. Box 39052*
- Amman 11104*
- Jordan*