



Airport International Group
مجموعة المطار الدولي

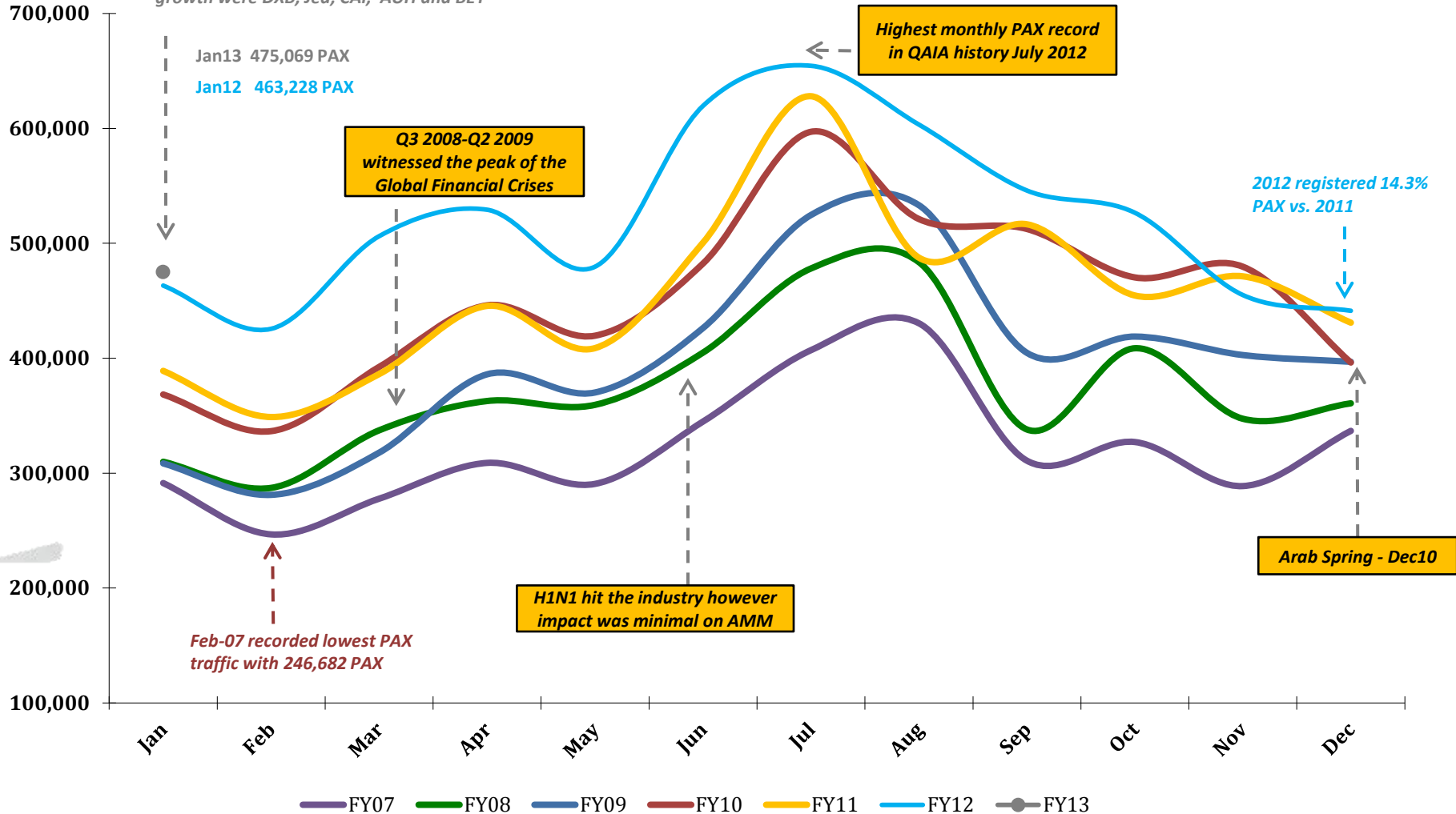
***QAIA MONTHLY
TRAFFIC STATISTICS
JANUARY 2013***



Total PAX per Month FY 2013 vs. Previous Years

+2.56% in PAX YTD Jan 2013 vs. YTD Jan 2012

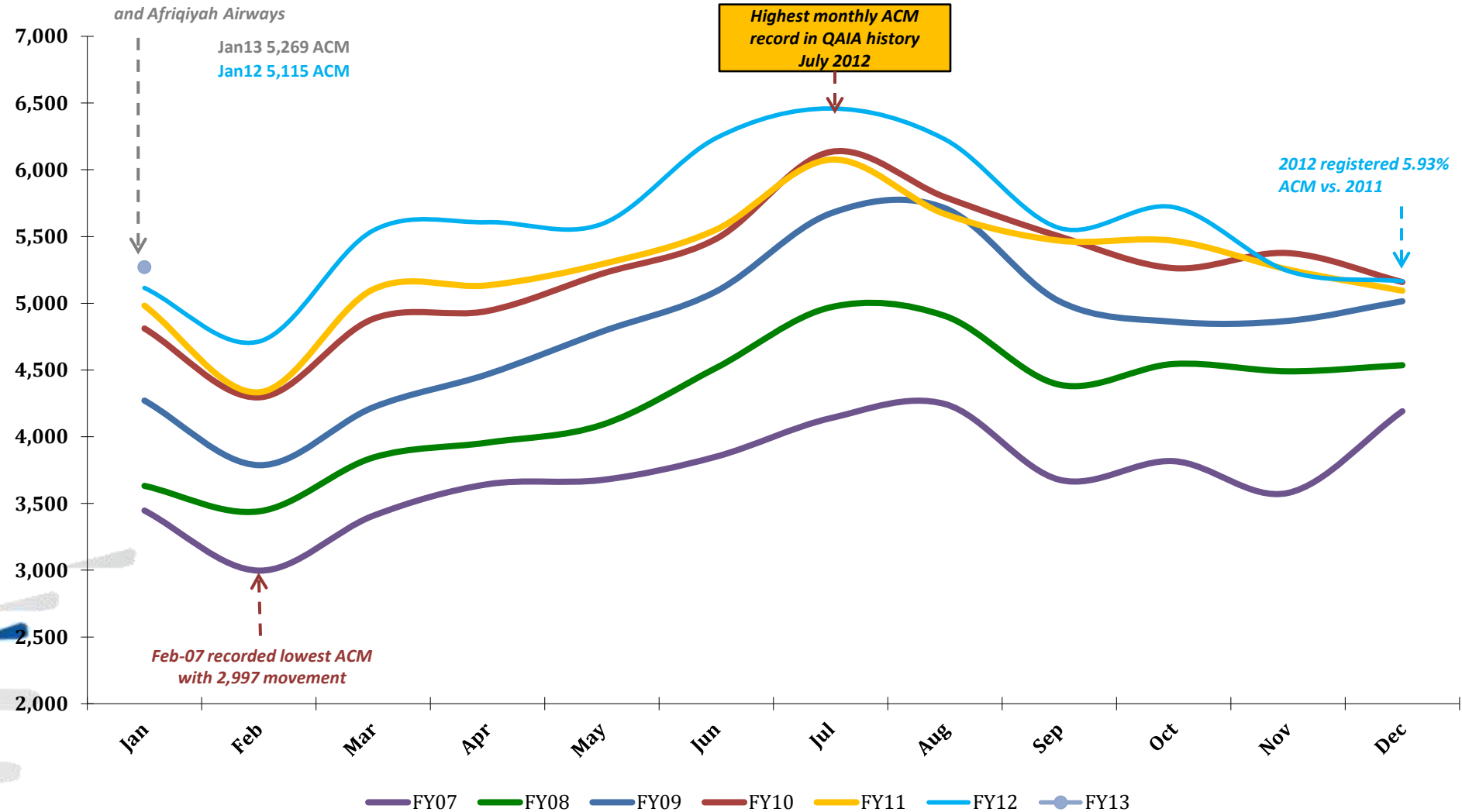
Top contributing Destinations to this month's growth were DXB, Jed, CAI, AUH and BEY



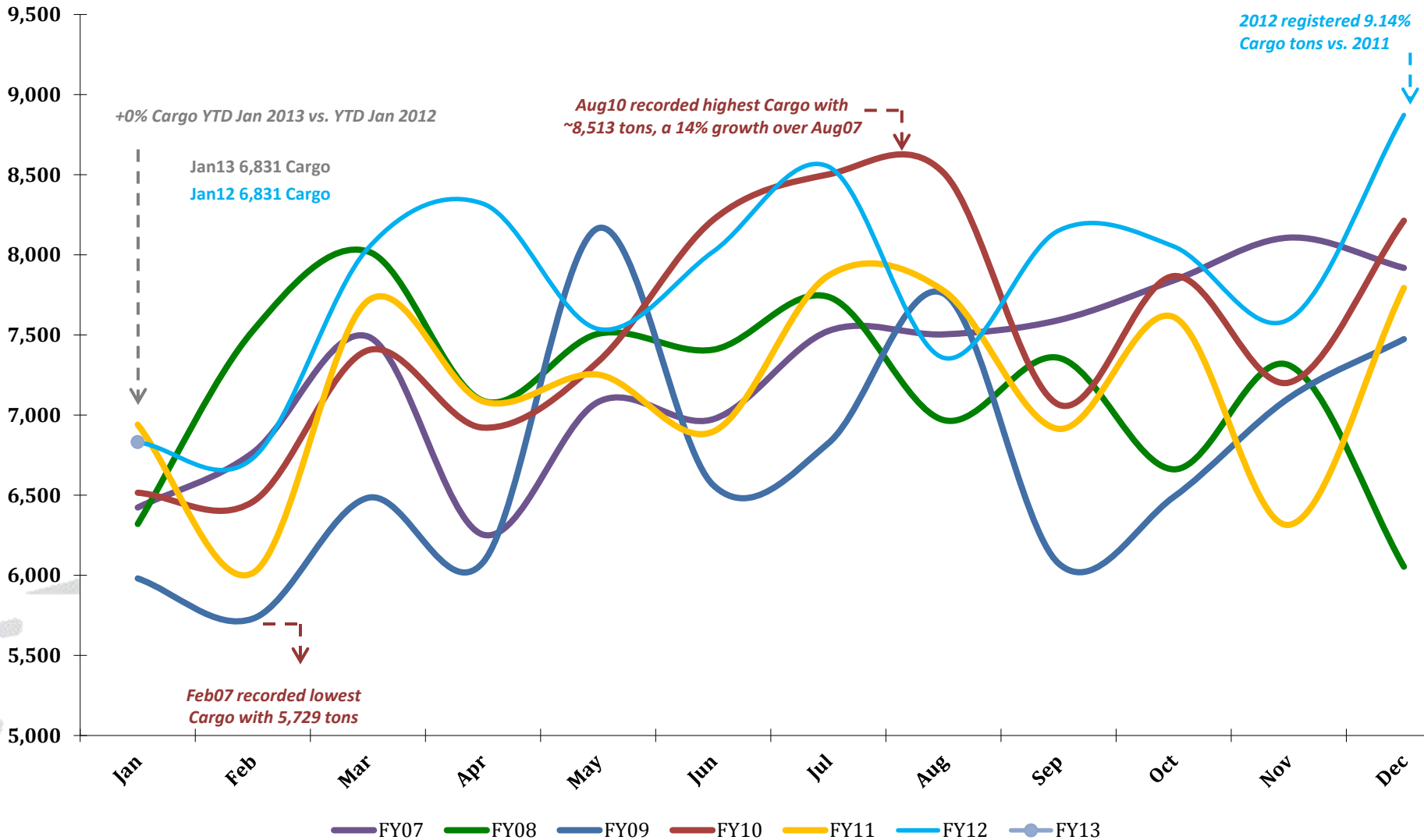
Total ACM per Month FY 2013 vs. Previous Years

+3.01% in ACM YTD Jan 2013 vs. YTD Jan 2012

Top contributing Airlines to this month's growth were EMIRATES, ROYAL FALCON, GULF AIR, FLY DUBAI airlines and Afriqiyah Airways



Total CARGO per Month FY 2013 vs. Previous Years



Traffic Data

TOTAL ARRIVAL PAX			
Month	FY13	FY12	Var %
Jan	217,768	218,154	-0.18%
Feb	0	221,181	0.00%
Mar	0	259,065	0.00%
Apr	0	263,436	0.00%
May	0	242,336	0.00%
Jun	0	336,813	0.00%
Jul	0	313,059	0.00%
Aug	0	289,430	0.00%
Sep	0	244,151	0.00%
Oct	0	266,026	0.00%
Nov	0	217,971	0.00%
Dec	0	222,066	0.00%
YTD January	217,768	218,154	-0.18%
Total	217,768	3,093,688	

TOTAL DEPARTURE PAX		
FY13	FY12	Var %
257,301	245,074	4.99%
0	204,410	0.00%
0	247,124	0.00%
0	265,784	0.00%
0	237,320	0.00%
0	282,802	0.00%
0	341,407	0.00%
0	313,856	0.00%
0	301,790	0.00%
0	260,558	0.00%
0	237,013	0.00%
0	219,222	0.00%
257,301	245,074	4.99%
257,301	3,156,360	

TOTAL PAX COMBINED		
FY13	FY12	Var %
475,069	463,228	2.56%
0	425,591	0.00%
0	506,189	0.00%
0	529,220	0.00%
0	479,656	0.00%
0	619,615	0.00%
0	654,466	0.00%
0	603,286	0.00%
0	545,941	0.00%
0	526,584	0.00%
0	454,984	0.00%
0	441,288	0.00%
475,069	463,228	2.56%
475,069	6,250,048	

TOTAL ARRIVAL ACM			
Month	FY13	FY12	Var %
Jan	2,634	2,555	3.09%
Feb	0	2,363	0.00%
Mar	0	2,769	0.00%
Apr	0	2,807	0.00%
May	0	2,792	0.00%
Jun	0	3,120	0.00%
Jul	0	3,230	0.00%
Aug	0	3,114	0.00%
Sep	0	2,786	0.00%
Oct	0	2,860	0.00%
Nov	0	2,621	0.00%
Dec	0	2,585	0.00%
YTD January	2,634	2,555	3.09%
Total	2,634	33,602	

TOTAL DEPARTURE ACM		
FY13	FY12	Var %
2,635	2,560	2.93%
0	2,350	0.00%
0	2,776	0.00%
0	2,800	0.00%
0	2,802	0.00%
0	3,118	0.00%
0	3,229	0.00%
0	3,114	0.00%
0	2,778	0.00%
0	2,860	0.00%
0	2,621	0.00%
0	2,580	0.00%
2,635	2,560	2.93%
2,635	33,588	

TOTAL ACM COMBINED		
FY13	FY12	Var %
5,269	5,115	3.01%
0	4,713	0.00%
0	5,545	0.00%
0	5,607	0.00%
0	5,594	0.00%
0	6,238	0.00%
0	6,459	0.00%
0	6,228	0.00%
0	5,564	0.00%
0	5,720	0.00%
0	5,242	0.00%
0	5,165	0.00%
5,269	5,115	3.01%
5,269	67,190	

TOTAL ARRIVAL CARGO TONS			
Month	FY13	FY12	Var %
Jan	4,075	3,960	2.91%
Feb	0	4,046	0.00%
Mar	0	4,716	0.00%
Apr	0	5,061	0.00%
May	0	4,284	0.00%
Jun	0	4,945	0.00%
Jul	0	5,148	0.00%
Aug	0	4,748	0.00%
Sep	0	5,034	0.00%
Oct	0	5,196	0.00%
Nov	0	4,549	0.00%
Dec	0	5,415	0.00%
YTD January	4,075	3,960	2.91%
Total	4,075	57,101	

TOTAL DEPARTURE CARGO TONS		
FY13	FY12	Var %
2,756	2,871	-4.02%
0	2,684	0.00%
0	3,325	0.00%
0	3,258	0.00%
0	3,254	0.00%
0	3,076	0.00%
0	3,404	0.00%
0	2,609	0.00%
0	3,118	0.00%
0	2,857	0.00%
0	3,048	0.00%
0	3,459	0.00%
2,756	2,871	-4.02%
2,756	36,963	

TOTAL CARGO COMBINED TONS		
FY13	FY12	Var %
6,831	6,831	0.00%
0	6,731	0.00%
0	8,041	0.00%
0	8,319	0.00%
0	7,538	0.00%
0	8,021	0.00%
0	8,551	0.00%
0	7,357	0.00%
0	8,152	0.00%
0	8,053	0.00%
0	7,597	0.00%
0	8,874	0.00%
6,831	6,831	0.00%
6,831	94,064	