



Airport International Group
مجموعة المطار الدولي

***QAIA MONTHLY
TRAFFIC STATISTICS
OCTOBER 2013***

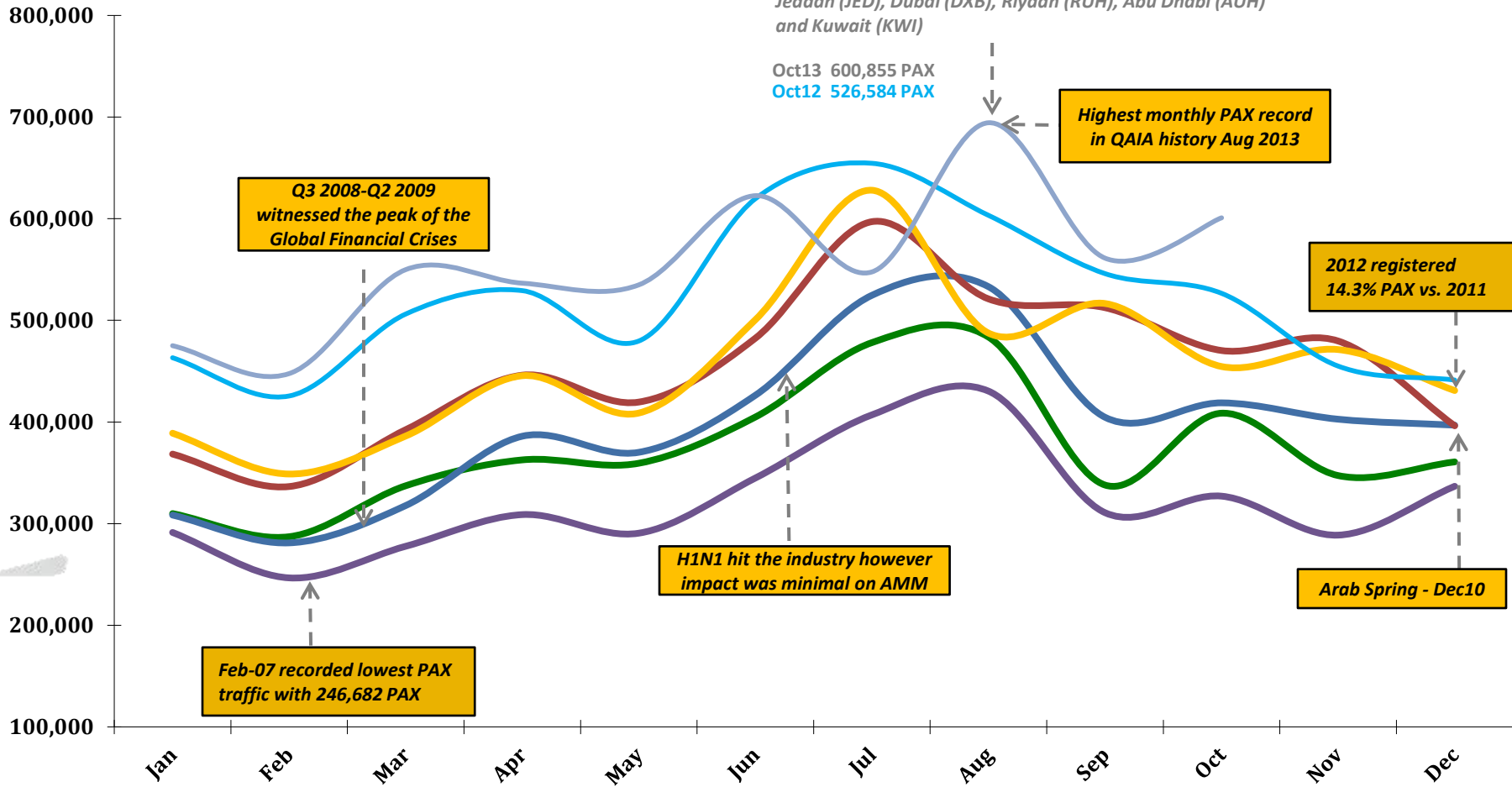


Total PAX per Month FY 2013 vs. Previous Years

+4.05% in PAX YTD Oct 2013 vs. YTD Oct 2012

Top contributing Destinations to this month's growth were Jeddah (JED), Dubai (DXB), Riyadh (RUH), Abu Dhabi (AUH) and Kuwait (KWI)

Oct13 600,855 PAX
Oct12 526,584 PAX

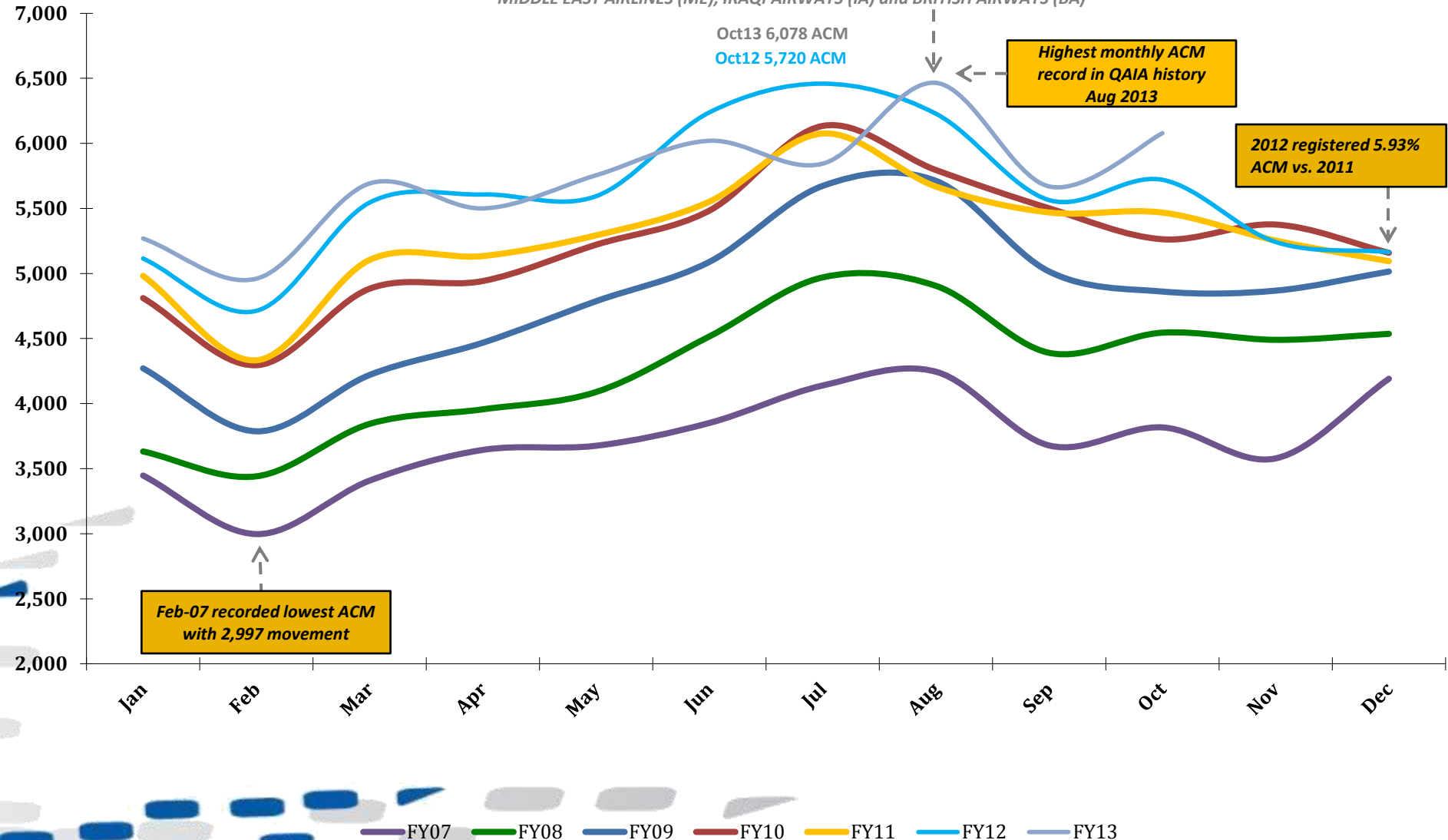


FY07 FY08 FY09 FY10 FY11 FY12 FY13

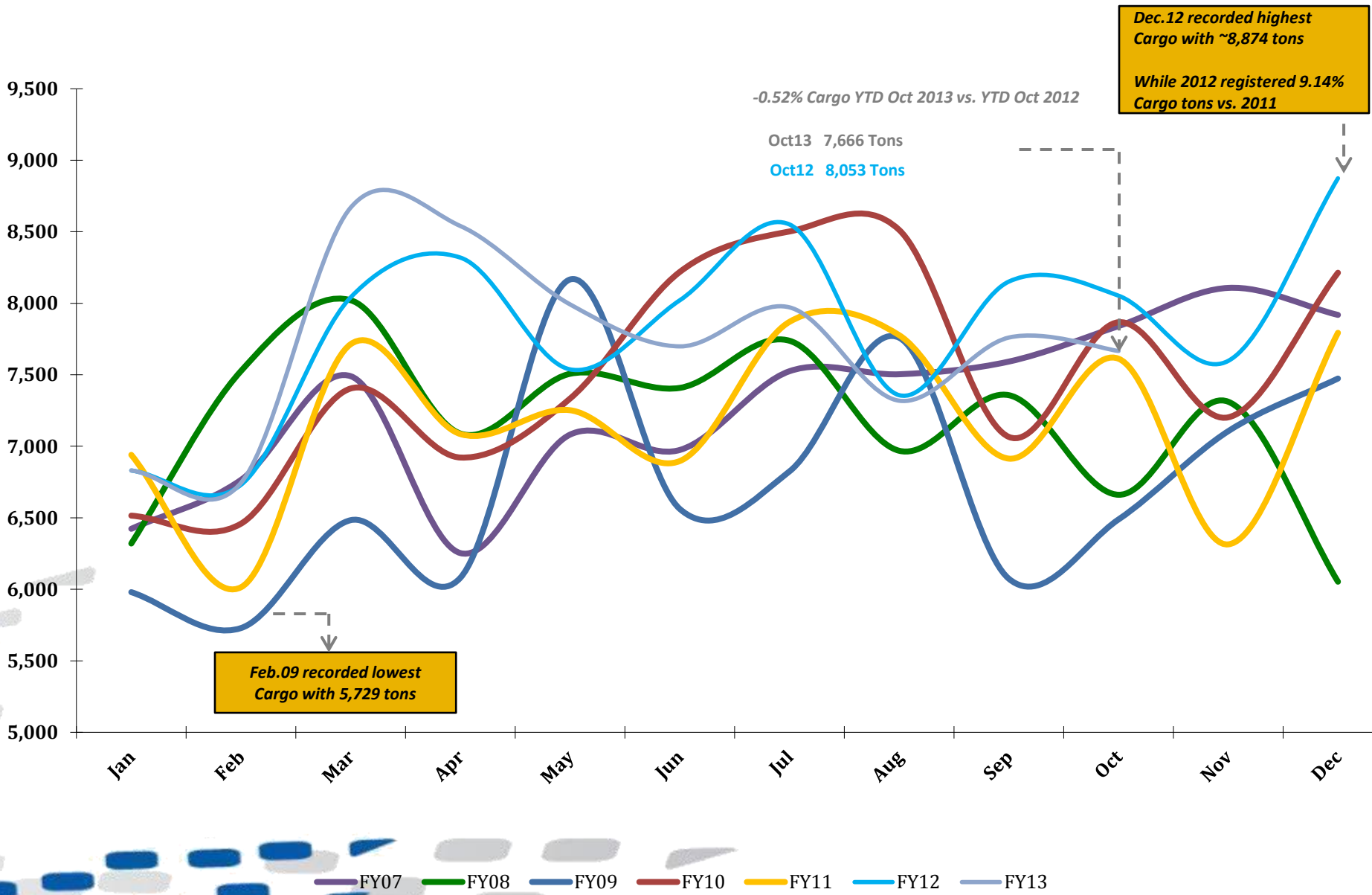
Total ACM per Month FY 2013 vs. Previous Years

+0.83% in ACM YTD Oct 2013 vs. YTD Oct 2012

Top contributing Airlines to this month's growth were ROYAL JORDANIAN (RJ), SAUDIA (SV), MIDDLE EAST AIRLINES (ME), IRAQI AIRWAYS (IA) and BRITISH AIRWAYS (BA)



Total CARGO per Month FY 2013 vs. Previous Years



Traffic Data - Public Stats

October 31, 2013

TOTAL ARRIVAL PAX			
Month	FY13	FY12	Var %
Jan	217,768	218,154	-0.18%
Feb	234,762	221,181	6.14%
Mar	284,339	259,065	9.76%
Apr	268,841	263,436	2.05%
May	274,710	242,336	13.36%
Jun	332,790	336,813	-1.19%
Jul	287,985	313,059	-8.01%
Aug	336,626	289,430	16.31%
Sep	248,087	244,151	1.61%
Oct	300,525	266,026	12.97%
Nov	0	217,971	0.00%
Dec	0	222,066	0.00%
YTD October	2,786,433	2,653,651	5.00%
Total	2,786,433	3,093,688	

TOTAL DEPARTURE PAX		
FY13	FY12	Var %
257,301	245,074	4.99%
212,832	204,410	4.12%
265,522	247,124	7.44%
267,718	265,784	0.73%
260,188	237,320	9.64%
289,839	282,802	2.49%
259,636	341,407	-23.95%
357,717	313,856	13.97%
313,118	301,790	3.75%
300,330	260,558	15.26%
0	237,013	0.00%
0	219,222	0.00%
2,784,201	2,700,125	3.11%
2,784,201	3,156,360	

TOTAL PAX COMBINED		
FY13	FY12	Var %
475,069	463,228	2.56%
447,594	425,591	5.17%
549,861	506,189	8.63%
536,559	529,220	1.39%
534,898	479,656	11.52%
622,629	619,615	0.49%
547,621	654,466	-16.33%
694,343	603,286	15.09%
561,205	545,941	2.80%
600,855	526,584	14.10%
0	454,984	0.00%
0	441,288	0.00%
5,570,634	5,353,776	4.05%
5,570,634	6,250,048	

TOTAL ARRIVAL ACM			
Month	FY13	FY12	Var %
Jan	2,634	2,555	3.09%
Feb	2,477	2,363	4.82%
Mar	2,848	2,769	2.85%
Apr	2,747	2,807	-2.14%
May	2,878	2,792	3.08%
Jun	3,014	3,120	-3.40%
Jul	2,923	3,230	-9.50%
Aug	3,231	3,114	3.76%
Sep	2,843	2,786	2.05%
Oct	3,033	2,860	6.05%
Nov	0	2,621	0.00%
Dec	0	2,585	0.00%
YTD October	28,628	28,396	0.82%
Total	28,628	33,602	

TOTAL DEPARTURE ACM		
FY13	FY12	Var %
2,635	2,560	2.93%
2,483	2,350	5.66%
2,844	2,776	2.45%
2,753	2,800	-1.68%
2,877	2,802	2.68%
3,006	3,118	-3.59%
2,921	3,229	-9.54%
3,234	3,114	3.85%
2,826	2,778	1.73%
3,045	2,860	6.47%
0	2,621	0.00%
0	2,580	0.00%
28,624	28,387	0.83%
28,624	33,588	

TOTAL ACM COMBINED		
FY13	FY12	Var %
5,269	5,115	3.01%
4,960	4,713	5.24%
5,692	5,545	2.65%
5,500	5,607	-1.91%
5,755	5,594	2.88%
6,020	6,238	-3.49%
5,844	6,459	-9.52%
6,465	6,228	3.81%
5,669	5,564	1.89%
6,078	5,720	6.26%
0	5,242	0.00%
0	5,165	0.00%
57,252	56,783	0.83%
57,252	67,190	

TOTAL ARRIVAL CARGO TONS			
Month	FY13	FY12	Var %
Jan	4,075	3,960	2.91%
Feb	4,005	4,046	-1.03%
Mar	5,170	4,716	9.62%
Apr	5,151	5,061	1.78%
May	4,945	4,284	15.44%
Jun	4,748	4,945	-3.98%
Jul	5,020	5,148	-2.47%
Aug	4,249	4,748	-10.52%
Sep	4,751	5,034	-5.61%
Oct	4,850	5,196	-6.67%
Nov	0	4,549	0.00%
Dec	0	5,415	0.00%
YTD October	46,964	47,138	-0.37%
Total	46,964	57,101	

TOTAL DEPARTURE CARGO TONS		
FY13	FY12	Var %
2,756	2,871	-4.02%
2,740	2,684	2.07%
3,499	3,325	5.23%
3,389	3,258	4.02%
3,047	3,254	-6.36%
2,951	3,076	-4.08%
2,951	3,404	-13.30%
3,070	2,609	17.66%
3,009	3,118	-3.49%
2,817	2,857	-1.40%
0	3,048	0.00%
0	3,459	0.00%
30,228	30,456	-0.75%
30,228	36,963	

TOTAL CARGO COMBINED TONS		
FY13	FY12	Var %
6,831	6,831	0.00%
6,744	6,731	0.20%
8,669	8,041	7.80%
8,540	8,319	2.66%
7,992	7,538	6.03%
7,699	8,021	-4.02%
7,971	8,551	-6.78%
7,319	7,357	-0.53%
7,760	8,152	-4.80%
7,666	8,053	-4.80%
0	7,597	0.00%
0	8,874	0.00%
77,192	77,594	-0.52%
77,192	94,064	