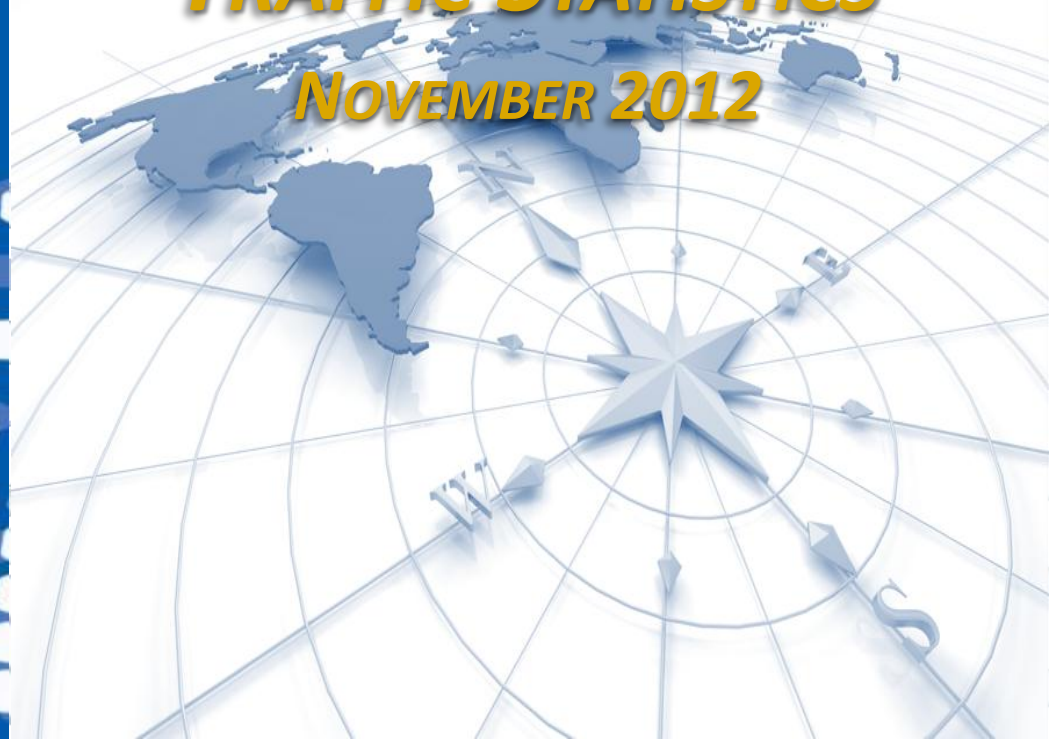


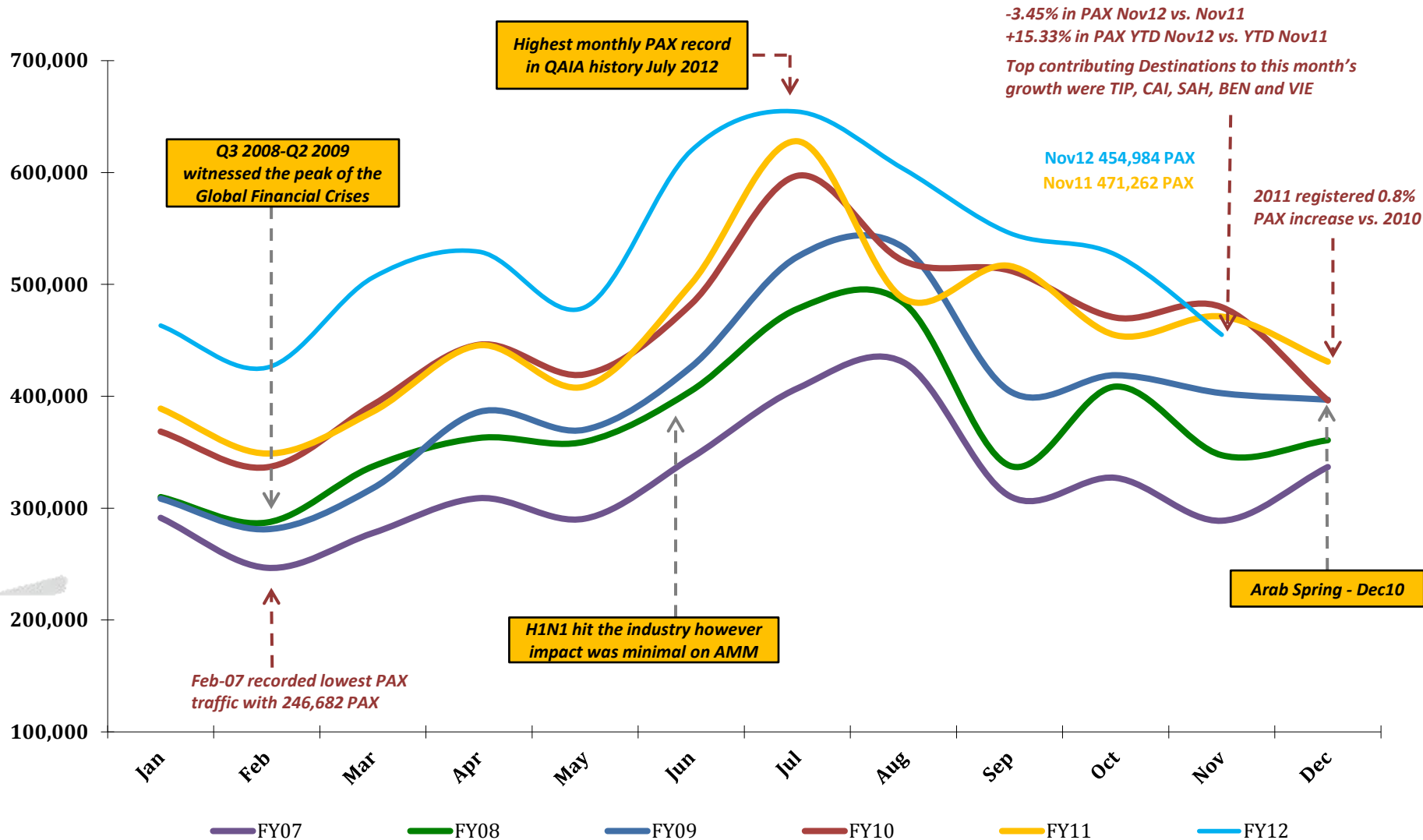


Airport International Group  
مجموعة المطار الدولي

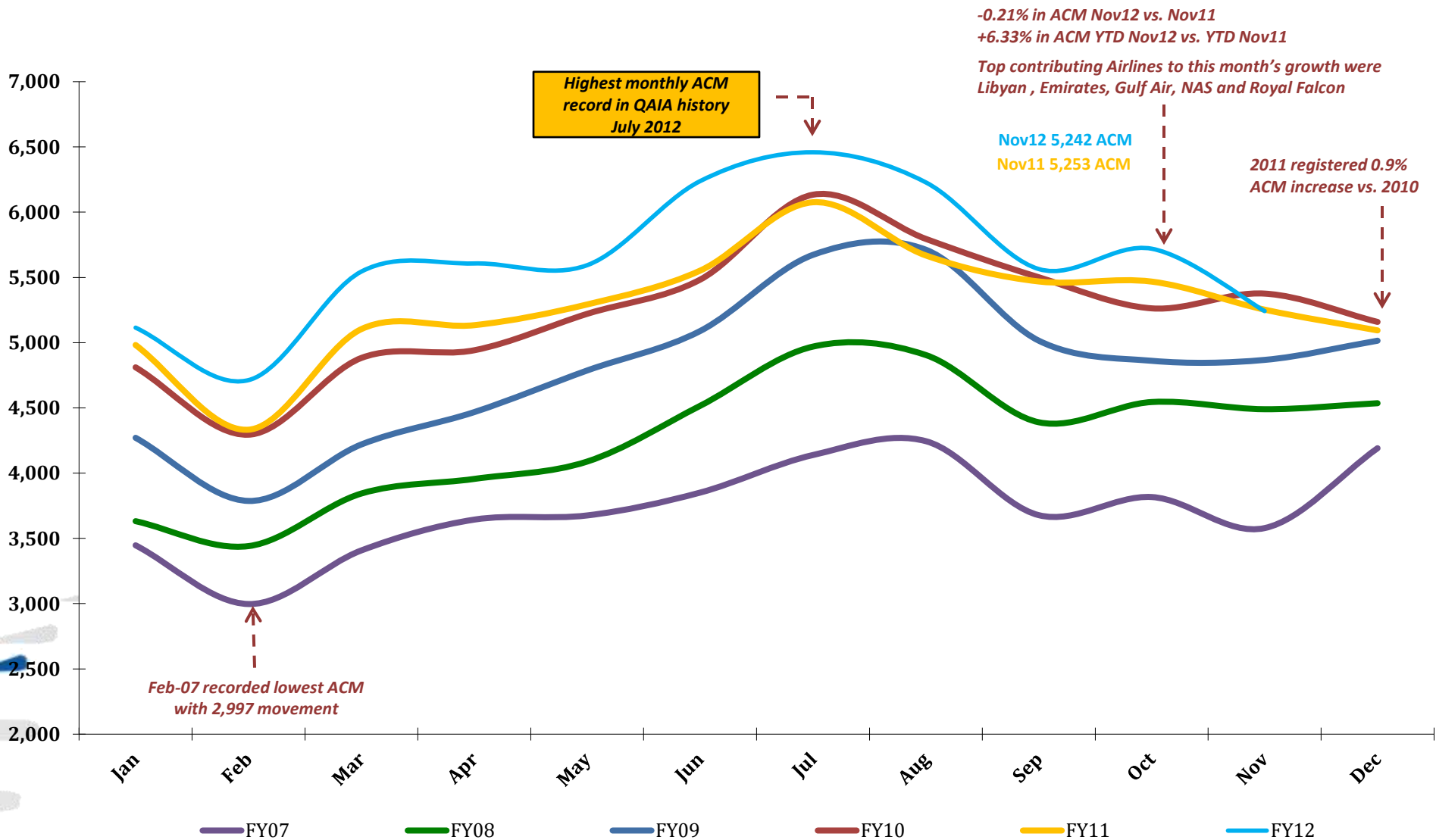
***QAIA MONTHLY  
TRAFFIC STATISTICS  
NOVEMBER 2012***



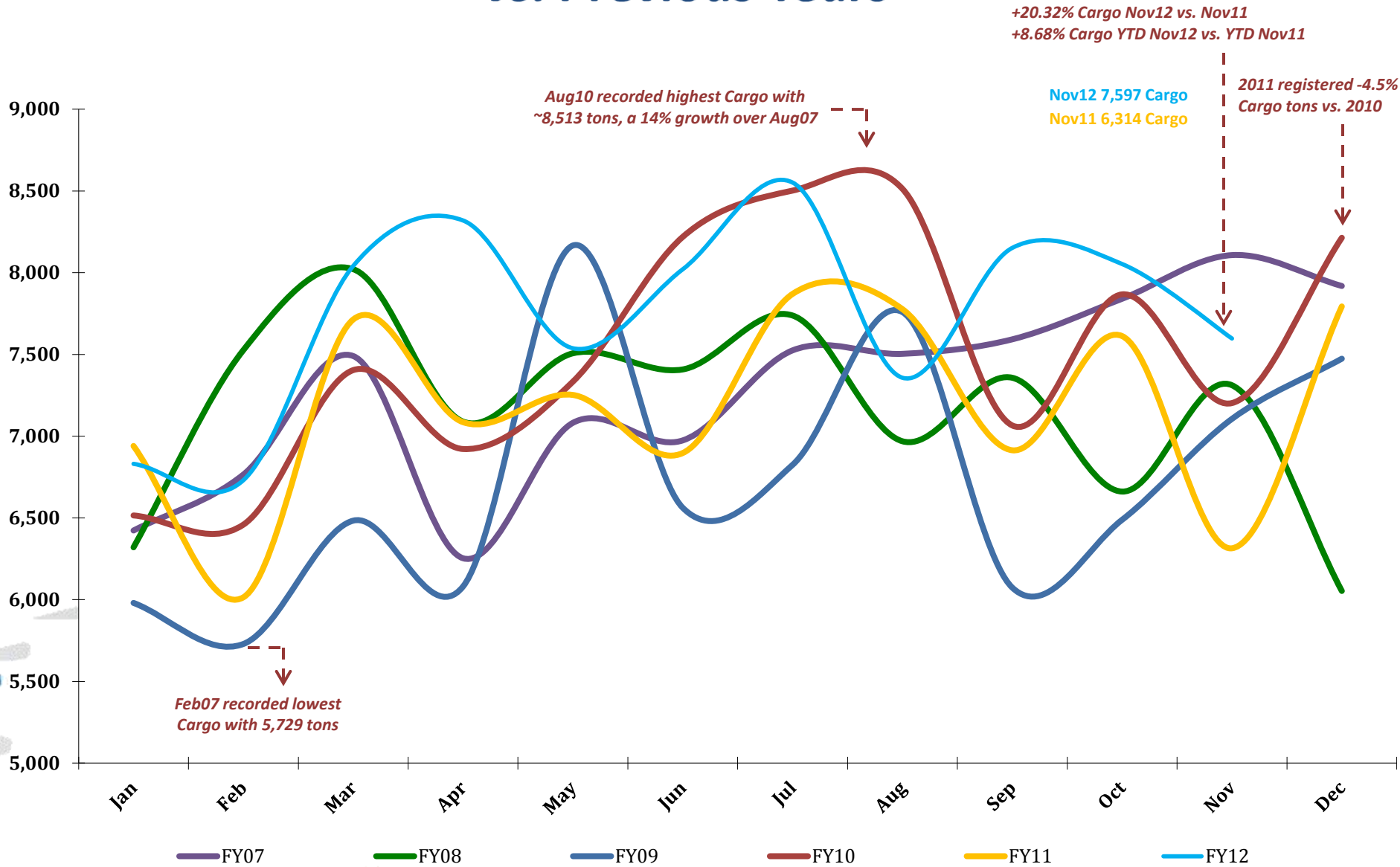
# Total PAX per Month FY 2012 vs. Previous Years



# Total ACM per Month FY 2012 vs. Previous Years



# Total CARGO per Month FY 2012 vs. Previous Years



# Traffic Data

| TOTAL ARRIVAL PAX |                  |                  |        |
|-------------------|------------------|------------------|--------|
| Month             | FY12             | FY11             | Var %  |
| Jan               | 218,154          | 177,386          | 22.98% |
| Feb               | 221,181          | 182,889          | 20.94% |
| Mar               | 259,065          | 197,952          | 30.87% |
| Apr               | 263,436          | 222,993          | 18.14% |
| May               | 242,336          | 208,811          | 16.06% |
| Jun               | 336,813          | 278,591          | 20.90% |
| Jul               | 313,059          | 322,221          | -2.84% |
| Aug               | 289,430          | 225,339          | 28.44% |
| Sep               | 244,151          | 230,895          | 5.74%  |
| Oct               | 266,026          | 227,821          | 16.77% |
| Nov               | 217,971          | 230,905          | -5.60% |
| Dec               |                  | 219,027          | 0.00%  |
| YTD November      | 2,871,622        | 2,505,803        | 14.60% |
| <b>Total</b>      | <b>2,871,622</b> | <b>2,724,830</b> |        |

| TOTAL DEPARTURE PAX |                  |        |
|---------------------|------------------|--------|
| FY12                | FY11             | Var %  |
| 245,074             | 211,614          | 15.81% |
| 204,410             | 165,943          | 23.18% |
| 247,124             | 188,251          | 31.27% |
| 265,784             | 222,533          | 19.44% |
| 237,320             | 200,016          | 18.65% |
| 282,802             | 221,971          | 27.40% |
| 341,407             | 305,748          | 11.66% |
| 313,856             | 262,141          | 19.73% |
| 301,790             | 285,658          | 5.65%  |
| 260,558             | 226,741          | 14.91% |
| 237,013             | 240,357          | -1.39% |
|                     | 211,923          | 0.00%  |
| 2,937,138           | 2,530,973        | 16.05% |
| <b>2,937,138</b>    | <b>2,742,896</b> |        |

| TOTAL PAX COMBINED |                  |        |
|--------------------|------------------|--------|
| FY12               | FY11             | Var %  |
| 463,228            | 389,000          | 19.08% |
| 425,591            | 348,832          | 22.00% |
| 506,189            | 386,203          | 31.07% |
| 529,220            | 445,526          | 18.79% |
| 479,656            | 408,827          | 17.32% |
| 619,615            | 500,562          | 23.78% |
| 654,466            | 627,969          | 4.22%  |
| 603,286            | 487,480          | 23.76% |
| 545,941            | 516,553          | 5.69%  |
| 526,584            | 454,562          | 15.84% |
| 454,984            | 471,262          | -3.45% |
|                    | 430,950          | 0.00%  |
| 5,808,760          | 5,036,776        | 15.33% |
| <b>5,808,760</b>   | <b>5,467,726</b> |        |

| TOTAL ARRIVAL ACM |               |               |        |
|-------------------|---------------|---------------|--------|
| Month             | FY12          | FY11          | Var %  |
| Jan               | 2,555         | 2,487         | 2.73%  |
| Feb               | 2,363         | 2,167         | 9.04%  |
| Mar               | 2,769         | 2,556         | 8.33%  |
| Apr               | 2,807         | 2,564         | 9.48%  |
| May               | 2,792         | 2,645         | 5.56%  |
| Jun               | 3,120         | 2,777         | 12.35% |
| Jul               | 3,230         | 3,038         | 6.32%  |
| Aug               | 3,114         | 2,833         | 9.92%  |
| Sep               | 2,786         | 2,735         | 1.86%  |
| Oct               | 2,860         | 2,737         | 4.49%  |
| Nov               | 2,621         | 2,628         | 0.00%  |
| Dec               |               | 2,547         | 0.00%  |
| YTD November      | 31,017        | 29,167        | 6.34%  |
| <b>Total</b>      | <b>31,017</b> | <b>31,714</b> |        |

| TOTAL DEPARTURE ACM |               |        |
|---------------------|---------------|--------|
| FY12                | FY11          | Var %  |
| 2,560               | 2,495         | 2.61%  |
| 2,350               | 2,166         | 8.49%  |
| 2,776               | 2,548         | 8.95%  |
| 2,800               | 2,570         | 8.95%  |
| 2,802               | 2,648         | 5.82%  |
| 3,118               | 2,775         | 12.36% |
| 3,229               | 3,038         | 6.29%  |
| 3,114               | 2,835         | 9.84%  |
| 2,778               | 2,734         | 1.61%  |
| 2,860               | 2,731         | 4.72%  |
| 2,621               | 2,625         | -0.15% |
|                     | 2,547         | 0.00%  |
| 31,008              | 29,165        | 6.32%  |
| <b>31,008</b>       | <b>31,712</b> |        |

| TOTAL ACM COMBINED |               |        |
|--------------------|---------------|--------|
| FY12               | FY11          | Var %  |
| 5,115              | 4,982         | 2.67%  |
| 4,713              | 4,333         | 8.77%  |
| 5,545              | 5,104         | 8.64%  |
| 5,607              | 5,134         | 9.21%  |
| 5,594              | 5,293         | 5.69%  |
| 6,238              | 5,552         | 12.36% |
| 6,459              | 6,076         | 6.30%  |
| 6,228              | 5,668         | 9.88%  |
| 5,564              | 5,469         | 1.74%  |
| 5,720              | 5,468         | 4.61%  |
| 5,242              | 5,253         | -0.21% |
|                    | 5,094         | 0.00%  |
| 62,025             | 58,332        | 6.33%  |
| <b>62,025</b>      | <b>63,426</b> |        |

| TOTAL ARRIVAL CARGO TONS |               |               |        |
|--------------------------|---------------|---------------|--------|
| Month                    | FY12          | FY11          | Var %  |
| Jan                      | 3,960         | 4,089         | -3.16% |
| Feb                      | 4,046         | 3,665         | 10.39% |
| Mar                      | 4,716         | 4,398         | 7.22%  |
| Apr                      | 5,061         | 4,248         | 19.15% |
| May                      | 4,284         | 4,352         | -1.58% |
| Jun                      | 4,945         | 4,024         | 22.87% |
| Jul                      | 5,148         | 4,713         | 9.22%  |
| Aug                      | 4,748         | 4,671         | 1.65%  |
| Sep                      | 5,034         | 3,989         | 26.18% |
| Oct                      | 5,196         | 4,545         | 14.34% |
| Nov                      | 4,549         | 3,830         | 18.76% |
| Dec                      |               | 4,759         | 0.00%  |
| YTD November             | 51,687        | 46,526        | 11.09% |
| <b>Total</b>             | <b>51,687</b> | <b>51,285</b> |        |

| TOTAL DEPARTURE CARGO TONS |               |         |
|----------------------------|---------------|---------|
| FY12                       | FY11          | Var %   |
| 2,871                      | 2,851         | 0.71%   |
| 2,684                      | 2,349         | 14.28%  |
| 3,325                      | 3,315         | 0.30%   |
| 3,258                      | 2,838         | 14.81%  |
| 3,254                      | 2,900         | 12.21%  |
| 3,076                      | 2,872         | 7.09%   |
| 3,404                      | 3,157         | 7.81%   |
| 2,609                      | 3,106         | -15.99% |
| 3,118                      | 2,925         | 6.62%   |
| 2,857                      | 3,068         | -6.88%  |
| 3,048                      | 2,484         | 22.72%  |
|                            | 3,034         | 0.00%   |
| 33,504                     | 31,864        | 5.15%   |
| <b>33,504</b>              | <b>34,898</b> |         |

| TOTAL CARGO COMBINED TONS |               |        |
|---------------------------|---------------|--------|
| FY12                      | FY11          | Var %  |
| 6,831                     | 6,940         | -1.57% |
| 6,731                     | 6,014         | 11.91% |
| 8,041                     | 7,714         | 4.25%  |
| 8,319                     | 7,086         | 17.41% |
| 7,538                     | 7,252         | 3.94%  |
| 8,021                     | 6,897         | 16.30% |
| 8,551                     | 7,870         | 8.66%  |
| 7,357                     | 7,777         | -5.39% |
| 8,152                     | 6,914         | 17.91% |
| 8,053                     | 7,612         | 5.79%  |
| 7,597                     | 6,314         | 20.32% |
|                           | 7,794         | 0.00%  |
| 85,191                    | 78,390        | 8.68%  |
| <b>85,191</b>             | <b>86,184</b> |        |