

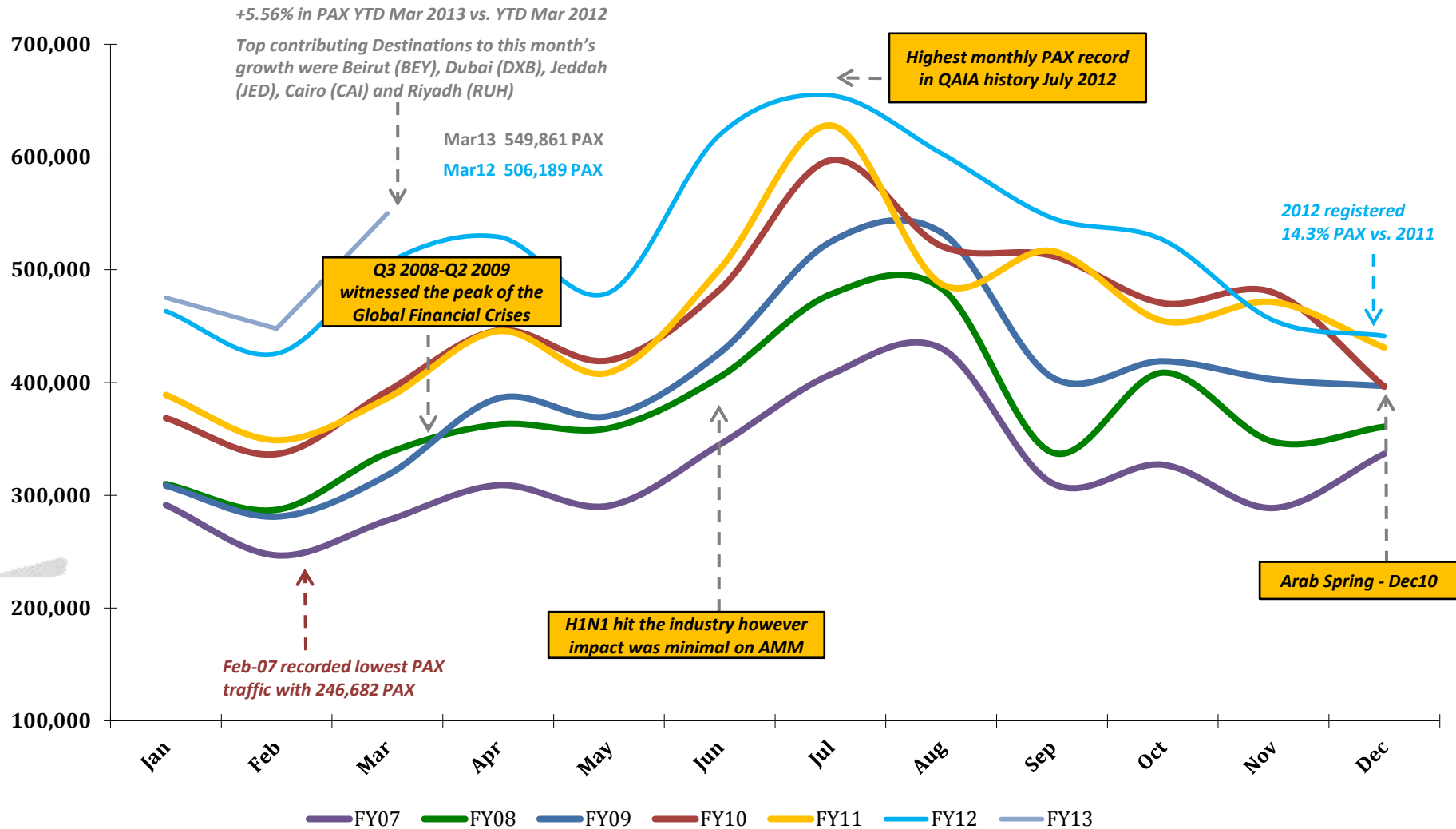


Airport International Group
مجموعة المطار الدولي

***QAIA MONTHLY
TRAFFIC STATISTICS
MARCH 2013***



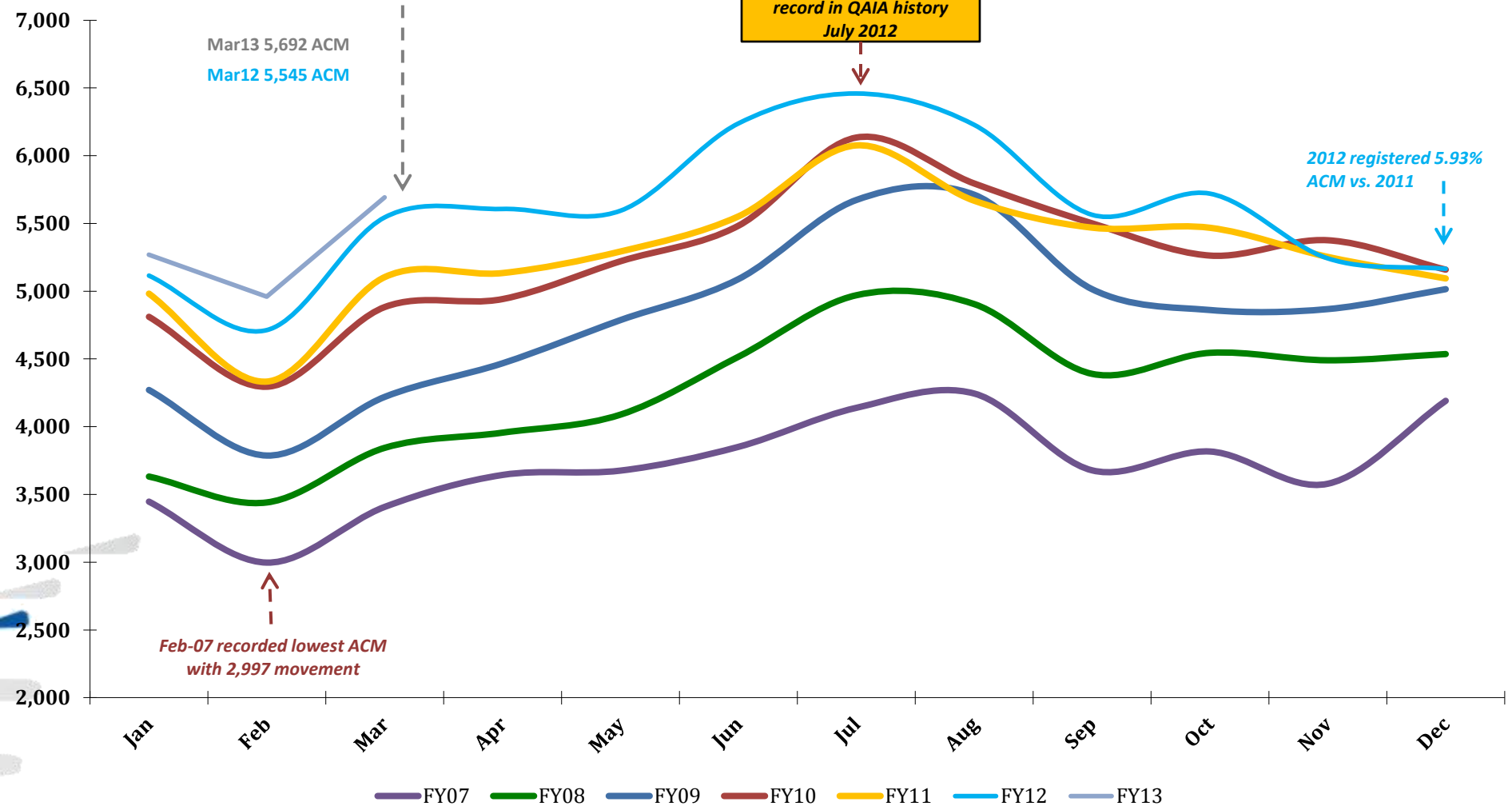
Total PAX per Month FY 2013 vs. Previous Years



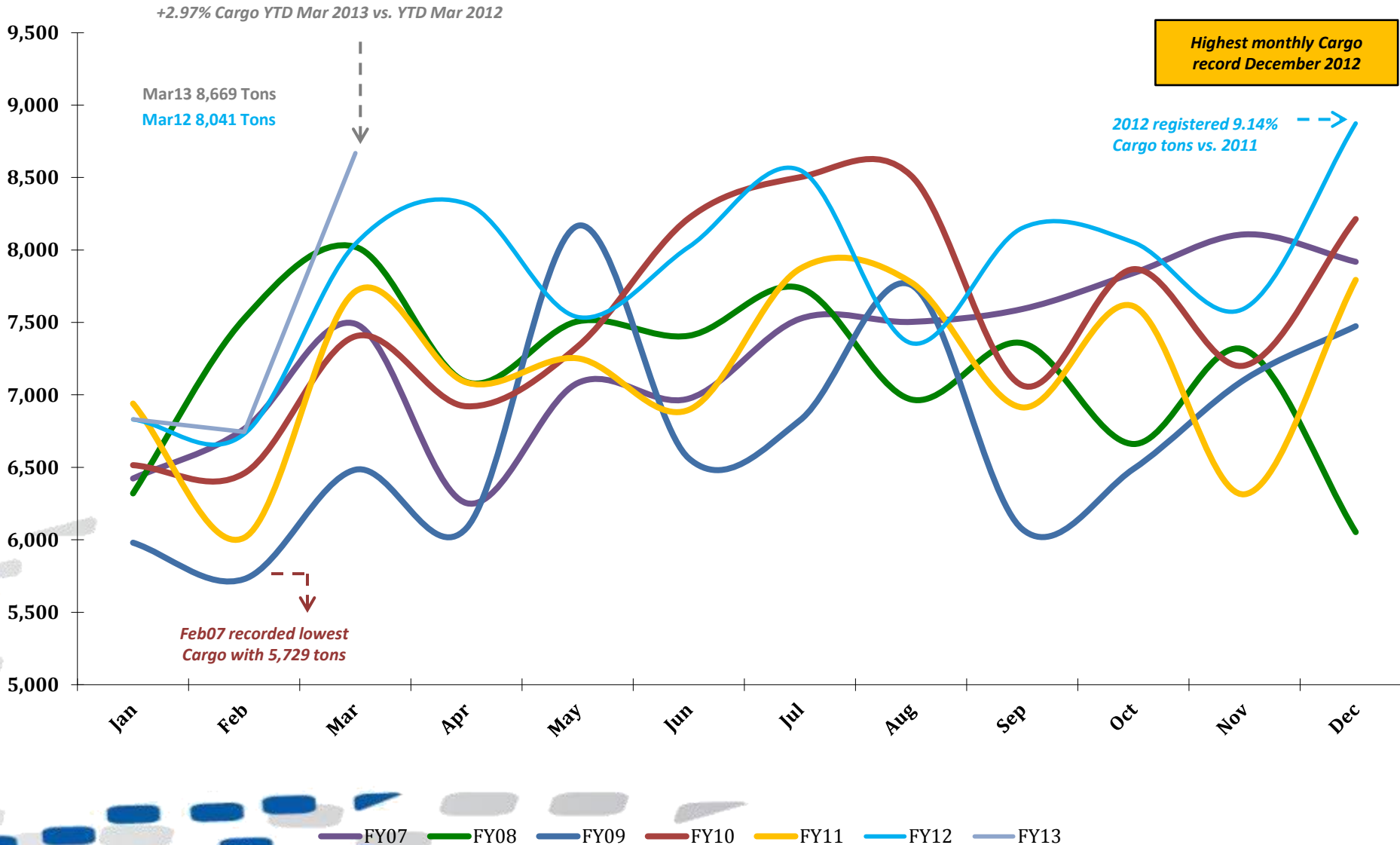
Total ACM per Month FY 2013 vs. Previous Years

+3.56% in ACM YTD Mar 2013 vs. YTD Mar 2012

Top contributing Airlines to this month's growth were Royal Jordanian (RJ), Gulf Air (GF), Emirates (EK), Middle East Airlines (ME) and National Air Services (XY)



Total CARGO per Month FY 2013 vs. Previous Years



Traffic Data

TOTAL ARRIVAL PAX			
Month	FY13	FY12	Var %
Jan	217,768	218,154	-0.18%
Feb	234,762	221,181	6.14%
Mar	284,339	259,065	9.76%
Apr	0	263,436	0.00%
May	0	242,336	0.00%
Jun	0	336,813	0.00%
Jul	0	313,059	0.00%
Aug	0	289,430	0.00%
Sep	0	244,151	0.00%
Oct	0	266,026	0.00%
Nov	0	217,971	0.00%
Dec	0	222,066	0.00%
YTD March	736,869	698,400	5.51%
Total	736,869	3,093,688	

TOTAL DEPARTURE PAX		
FY13	FY12	Var %
257,301	245,074	4.99%
212,832	204,410	4.12%
265,522	247,124	7.44%
0	265,784	0.00%
0	237,320	0.00%
0	282,802	0.00%
0	341,407	0.00%
0	313,856	0.00%
0	301,790	0.00%
0	260,558	0.00%
0	237,013	0.00%
0	219,222	0.00%
735,655	696,608	5.61%
735,655	3,156,360	

TOTAL PAX COMBINED		
FY13	FY12	Var %
475,069	463,228	2.56%
447,594	425,591	5.17%
549,861	506,189	8.63%
0	529,220	0.00%
0	479,656	0.00%
0	619,615	0.00%
0	654,466	0.00%
0	603,286	0.00%
0	545,941	0.00%
0	526,584	0.00%
0	454,984	0.00%
0	441,288	0.00%
1,472,524	1,395,008	5.56%
1,472,524	6,250,048	

TOTAL ARRIVAL ACM			
Month	FY13	FY12	Var %
Jan	2,634	2,555	3.09%
Feb	2,477	2,363	4.82%
Mar	2,848	2,769	2.85%
Apr	0	2,807	0.00%
May	0	2,792	0.00%
Jun	0	3,120	0.00%
Jul	0	3,230	0.00%
Aug	0	3,114	0.00%
Sep	0	2,786	0.00%
Oct	0	2,860	0.00%
Nov	0	2,621	0.00%
Dec	0	2,585	0.00%
YTD March	7,959	7,687	3.54%
Total	7,959	33,602	

TOTAL DEPARTURE ACM		
FY13	FY12	Var %
2,635	2,560	2.93%
2,483	2,350	5.66%
2,844	2,776	2.45%
0	2,800	0.00%
0	2,802	0.00%
0	3,118	0.00%
0	3,229	0.00%
0	3,114	0.00%
0	2,778	0.00%
0	2,860	0.00%
0	2,621	0.00%
0	2,580	0.00%
7,962	7,686	3.59%
7,962	33,588	

TOTAL ACM COMBINED		
FY13	FY12	Var %
5,269	5,115	3.01%
4,960	4,713	5.24%
5,692	5,545	2.65%
0	5,607	0.00%
0	5,594	0.00%
0	6,238	0.00%
0	6,459	0.00%
0	6,228	0.00%
0	5,564	0.00%
0	5,720	0.00%
0	5,242	0.00%
0	5,165	0.00%
15,921	15,373	3.56%
15,921	67,190	

TOTAL ARRIVAL CARGO TONS			
Month	FY13	FY12	Var %
Jan	4,075	3,960	2.91%
Feb	4,005	4,046	-1.03%
Mar	5,170	4,716	9.62%
Apr	0	5,061	0.00%
May	0	4,284	0.00%
Jun	0	4,945	0.00%
Jul	0	5,148	0.00%
Aug	0	4,748	0.00%
Sep	0	5,034	0.00%
Oct	0	5,196	0.00%
Nov	0	4,549	0.00%
Dec	0	5,415	0.00%
YTD March	13,249	12,722	4.15%
Total	13,249	57,101	

TOTAL DEPARTURE CARGO TONS		
FY13	FY12	Var %
2,756	2,871	-4.02%
2,740	2,684	2.07%
3,499	3,325	5.23%
0	3,258	0.00%
0	3,254	0.00%
0	3,076	0.00%
0	3,404	0.00%
0	2,609	0.00%
0	3,118	0.00%
0	2,857	0.00%
0	3,048	0.00%
0	3,459	0.00%
8,995	8,881	1.28%
8,995	36,963	

TOTAL CARGO COMBINED TONS		
FY13	FY12	Var %
6,831	6,831	0.00%
6,744	6,731	0.20%
8,669	8,041	7.80%
0	8,319	0.00%
0	7,538	0.00%
0	8,021	0.00%
0	8,551	0.00%
0	7,357	0.00%
0	8,152	0.00%
0	8,053	0.00%
0	7,597	0.00%
0	8,874	0.00%
22,244	21,603	2.97%
22,244	94,064	