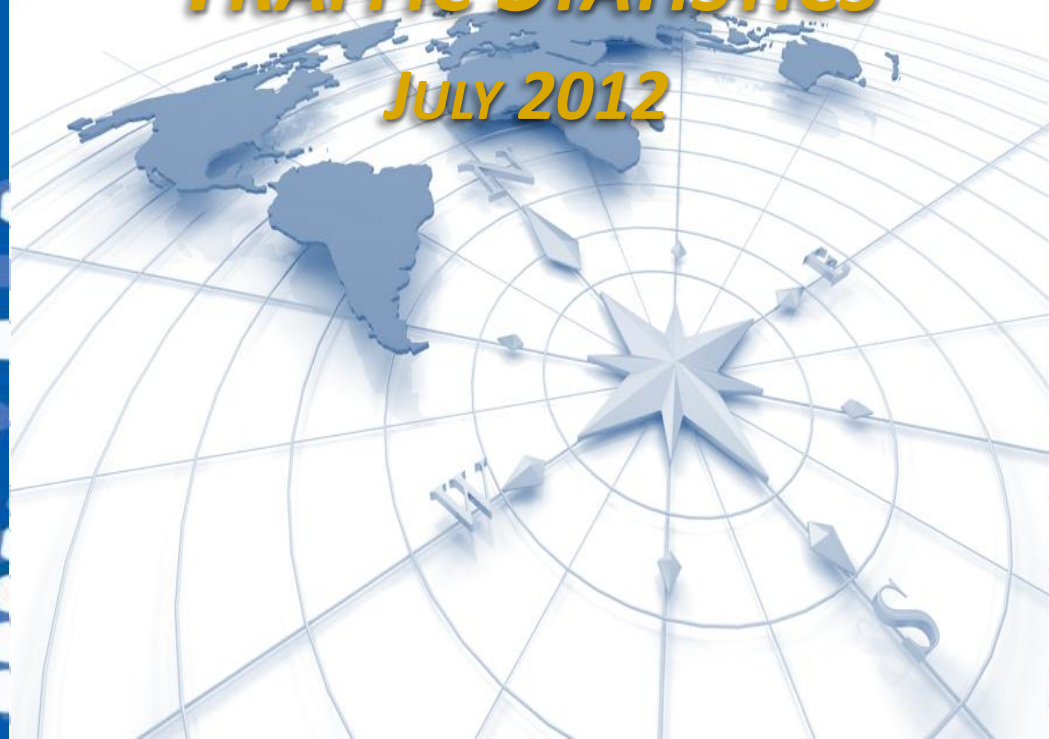


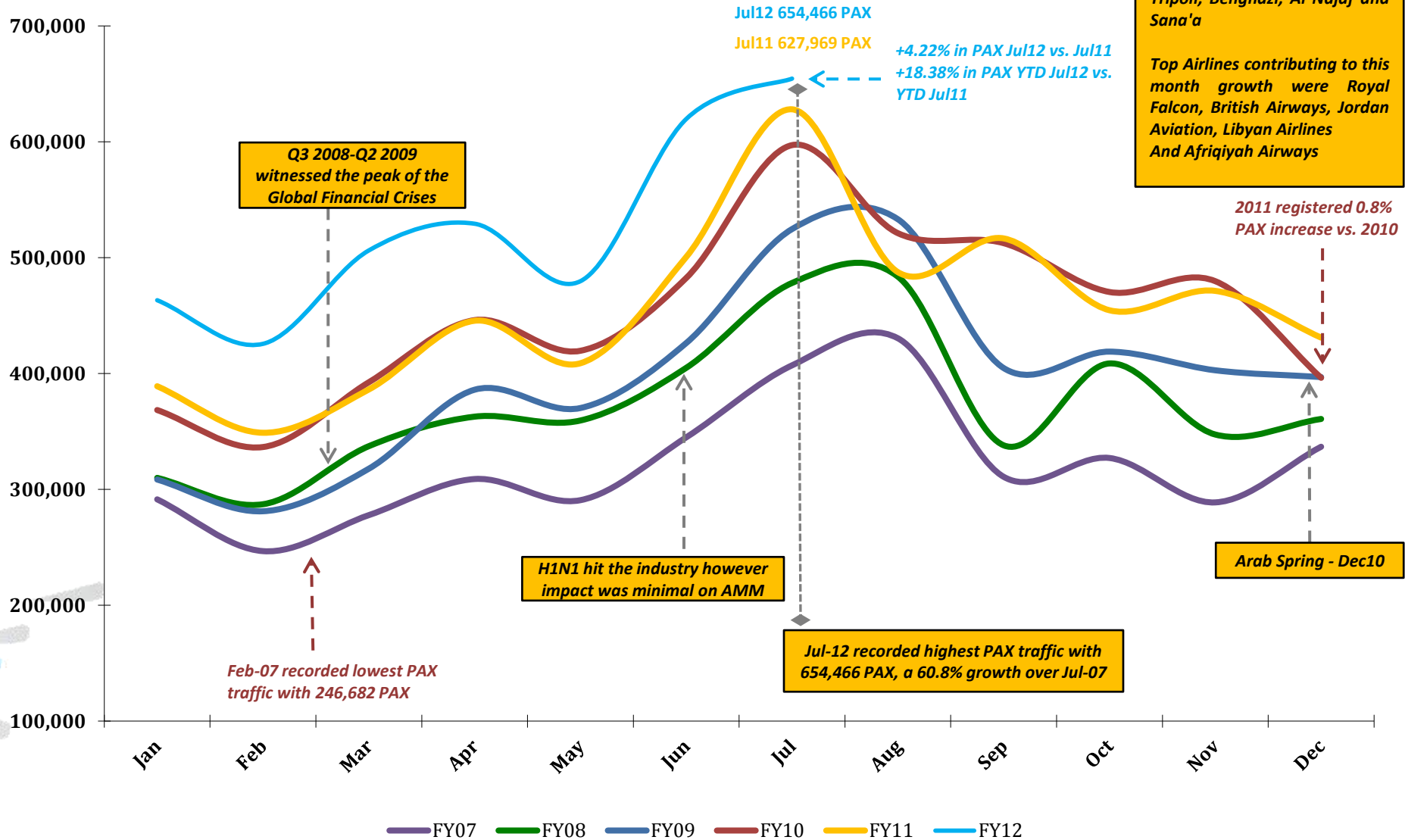


Airport International Group
مجموعة المطار الدولي

***QAIA MONTHLY
TRAFFIC STATISTICS
JULY 2012***



Total PAX per Month FY 2012 vs. Previous Years



Top Routes contributing to this month growth were Jeddah, Tripoli, Benghazi, Al Najaf and Sana'a

Top Airlines contributing to this month growth were Royal Falcon, British Airways, Jordan Aviation, Libyan Airlines And Afriqiyah Airways

2011 registered 0.8% PAX increase vs. 2010

Arab Spring - Dec10

Jul-12 recorded highest PAX traffic with 654,466 PAX, a 60.8% growth over Jul-07

Feb-07 recorded lowest PAX traffic with 246,682 PAX

H1N1 hit the industry however impact was minimal on AMM

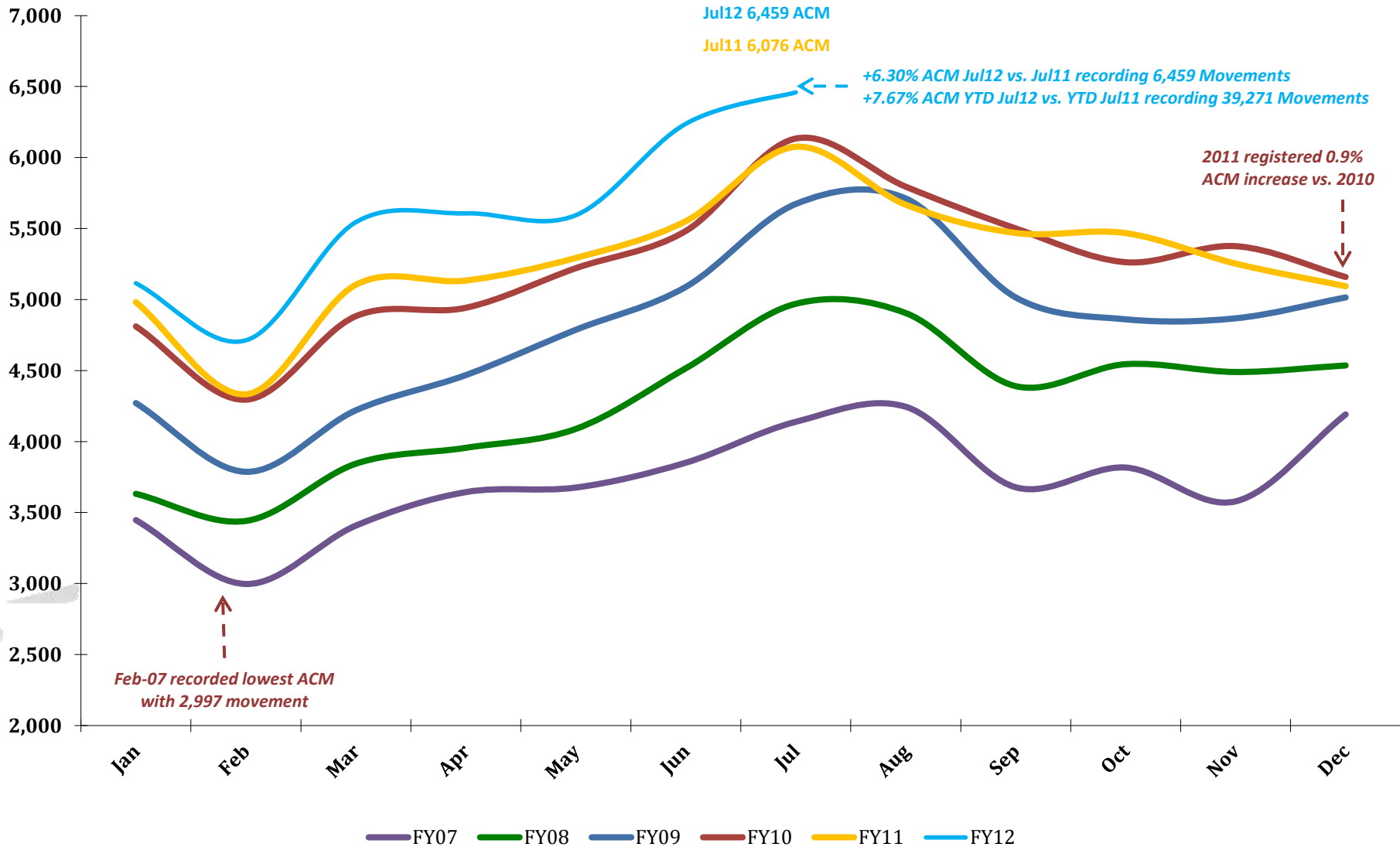
Q3 2008-Q2 2009 witnessed the peak of the Global Financial Crises

+4.22% in PAX Jul12 vs. Jul11
+18.38% in PAX YTD Jul12 vs. YTD Jul11

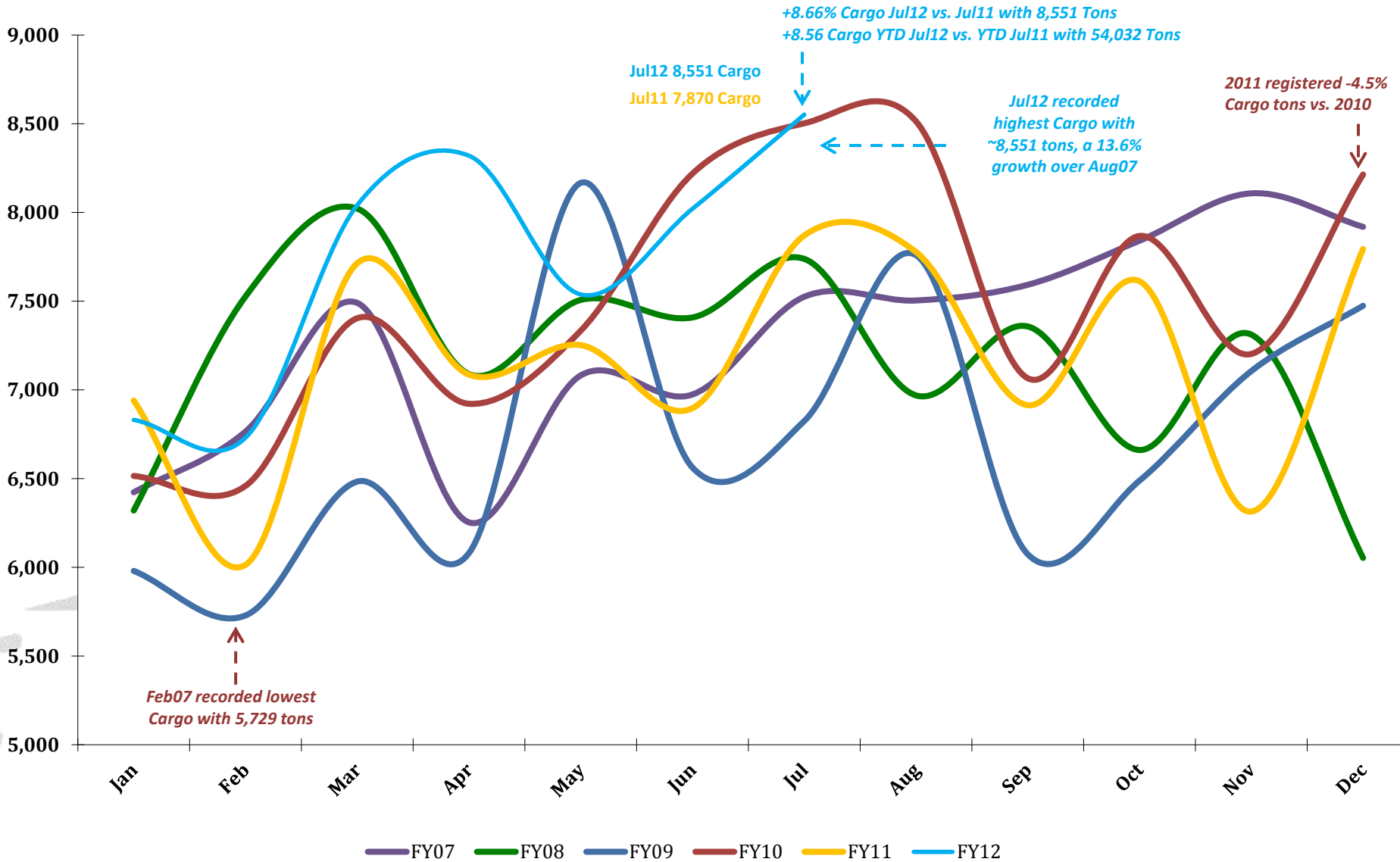
Jul12 654,466 PAX
Jul11 627,969 PAX

FY07 FY08 FY09 FY10 FY11 FY12

Total ACM per Month FY 2012 vs. Previous Years



Total CARGO per Month FY 2012 vs. Previous Years



QAIA Traffic Data – YTD July 2012

TOTAL ARRIVAL PAX			
Month	FY12	FY11	Var %
Jan	218,154	177,386	22.98%
Feb	221,181	182,889	20.94%
Mar	259,065	197,952	30.87%
Apr	263,436	222,993	18.14%
May	242,336	208,811	16.06%
Jun	336,813	278,591	20.90%
Jul	313,059	322,221	-2.84%
Aug		225,339	0.00%
Sep		230,895	0.00%
Oct		227,821	0.00%
Nov		230,905	0.00%
Dec		219,027	0.00%
YTD May	1,854,044	1,590,843	16.54%
Total	1,854,044	2,724,830	

TOTAL DEPARTURE PAX		
FY12	FY11	Var %
245,074	211,614	15.81%
204,410	165,943	23.18%
247,124	188,251	31.27%
265,784	222,533	19.44%
237,320	200,016	18.65%
282,802	221,971	27.40%
341,407	305,748	11.66%
	262,141	0.00%
	285,658	0.00%
	226,741	0.00%
	240,357	0.00%
	211,923	0.00%
1,823,921	1,516,076	20.31%
1,823,921	2,742,896	

TOTAL PAX COMBINED		
FY12	FY11	Var %
463,228	389,000	19.08%
425,591	348,832	22.00%
506,189	386,203	31.07%
529,220	445,526	18.79%
479,656	408,827	17.32%
619,615	500,562	23.78%
654,466	627,969	4.22%
	487,480	0.00%
	516,553	0.00%
	454,562	0.00%
	471,262	0.00%
	430,950	0.00%
3,677,965	3,106,919	18.38%
3,677,965	5,467,726	

TOTAL ARRIVAL ACM			
Month	FY12	FY11	Var %
Jan	2,555	2,487	2.73%
Feb	2,363	2,167	9.04%
Mar	2,769	2,556	8.33%
Apr	2,807	2,564	9.48%
May	2,792	2,645	5.56%
Jun	3,120	2,777	12.35%
Jul	3,230	3,038	6.32%
Aug		2,833	0.00%
Sep		2,735	0.00%
Oct		2,737	0.00%
Nov		2,628	0.00%
Dec		2,547	0.00%
YTD May	19,636	18,234	7.69%
Total	19,636	31,714	

TOTAL DEPARTURE ACM		
FY12	FY11	Var %
2,560	2,495	2.61%
2,350	2,166	8.49%
2,776	2,548	8.95%
2,800	2,570	8.95%
2,802	2,648	5.82%
3,118	2,775	12.36%
3,229	3,038	6.29%
	2,835	0.00%
	2,734	0.00%
	2,731	0.00%
	2,625	0.00%
	2,547	0.00%
19,635	18,240	7.65%
19,635	31,712	

TOTAL ACM COMBINED		
FY12	FY11	Var %
5,115	4,982	2.67%
4,713	4,333	8.77%
5,545	5,104	8.64%
5,607	5,134	9.21%
5,594	5,293	5.69%
6,238	5,552	12.36%
6,459	6,076	6.30%
	5,668	0.00%
	5,469	0.00%
	5,468	0.00%
	5,253	0.00%
	5,094	0.00%
39,271	36,474	7.67%
39,271	63,426	

TOTAL ARRIVAL CARGO TONS			
Month	FY12	FY11	Var %
Jan	3,960	4,089	-3.16%
Feb	4,046	3,665	10.39%
Mar	4,716	4,398	7.22%
Apr	5,061	4,248	19.15%
May	4,284	4,352	-1.58%
Jun	4,945	4,024	22.87%
Jul	5,148	4,713	9.22%
Aug		4,671	0.00%
Sep		3,989	0.00%
Oct		4,545	0.00%
Nov		3,830	0.00%
Dec		4,759	0.00%
YTD May	32,160	29,491	9.05%
Total	32,160	51,285	

TOTAL DEPARTURE CARGO TONS		
FY12	FY11	Var %
2,871	2,851	0.71%
2,684	2,349	14.28%
3,325	3,315	0.30%
3,258	2,838	14.81%
3,254	2,900	12.21%
3,076	2,872	7.09%
3,404	3,157	7.81%
	3,106	0.00%
	2,925	0.00%
	3,068	0.00%
	2,484	0.00%
	3,034	0.00%
21,872	20,282	7.84%
21,872	34,898	

TOTAL CARGO COMBINED TONS		
FY12	FY11	Var %
6,831	6,940	-1.57%
6,731	6,014	11.91%
8,041	7,714	4.25%
8,319	7,086	17.41%
7,538	7,252	3.94%
8,021	6,897	16.30%
8,551	7,870	8.66%
	7,777	0.00%
	6,914	0.00%
	7,612	0.00%
	6,314	0.00%
	7,794	0.00%
54,032	49,773	8.56%
54,032	86,184	